

Product Name: TGFBI (10L15) Rabbit Monoclonal Antibody
Catalog #: AMRe18853

Summary

Production Name	TGFBI (10L15) Rabbit Monoclonal Antibody
Description	Rabbit Monoclonal Antibody
Host	Rabbit
Application	WB
Reactivity	Human,Mouse,Rat

Performance

Conjugation	Unconjugated
Modification	Unmodified
Isotype	IgG
Clonality	Monoclonal
Form	Liquid
Storage	Store at 4°C short term. Aliquot and store at -20°C long term. Avoid freeze/thaw cycles.
Buffer	Supplied in 50mM Tris-Glycine(pH 7.4), 0.15M NaCl, 40%Glycerol, 0.01% New type preservative N and 0.05% BSA.
Purification	Affinity purification

Immunogen

Gene Name	TGFBI
Alternative Names	Beta ig; Beta ig h3; Beta ig-h3; BGH3_HUMAN; Big h3; BIGH3; CDB1; CDG2; CDGG1; CSD; CSD1; CSD2; CSD3; EBMD; Kerato epithelin; Kerato-epithelin; LCD1;
Gene ID	7045.0
SwissProt ID	Q15582.A synthetic peptide of human TGFBI

Application

Dilution Ratio	WB: 1:1000
Molecular Weight	54kDa

Product Name: TGFBI (10L15) Rabbit Monoclonal Antibody
Catalog #: AMRe18853

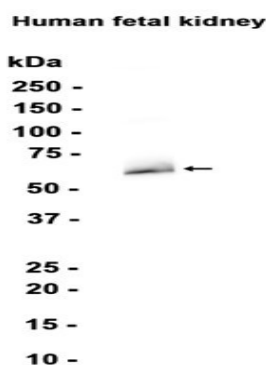


Background

TGFBI is a RGD-containing protein that binds to type I, II and IV collagens. The RGD motif is found in many extracellular matrix proteins modulating cell adhesion and serves as a ligand recognition sequence for several integrins. TGFBI plays a role in cell-collagen interactions and may be involved in endochondrial bone formation in cartilage. TGFBI is induced by transforming growth factor-beta and acts to inhibit cell adhesion. Plays a role in cell adhesion (PubMed:8024701). May play a role in cell-collagen interactions (By similarity).

Research Area

Image Data



Western blot analysis of extracts from Human fetal kidney tissue using RM4032 at 1:1000.

Note

For research use only.