

**Product Name: Synaptophysin (10B17) Rabbit
Monoclonal Antibody
Catalog #: AMRe18494**

Summary

Production Name	Synaptophysin (10B17) Rabbit Monoclonal Antibody
Description	Rabbit Monoclonal Antibody
Host	Rabbit
Application	WB
Reactivity	Human,Mouse,Rat

Performance

Conjugation	Unconjugated
Modification	Unmodified
Isotype	IgG
Clonality	Monoclonal
Form	Liquid
Storage	Store at 4°C short term. Aliquot and store at -20°C long term. Avoid freeze/thaw cycles.
Buffer	Supplied in 50mM Tris-Glycine(pH 7.4), 0.15M NaCl, 40%Glycerol, 0.01% New type preservative N and 0.05% BSA.
Purification	Affinity purification

Immunogen

Gene Name	SYP
Alternative Names	Major synaptic vesicle protein p38; MRXSYP; Synaptophysin; SYP; SYPH
Gene ID	6855.0
SwissProt ID	P08247.A synthetic peptide of human Synaptophysin

Application

Dilution Ratio	WB: 1:2000-1:10000
Molecular Weight	34kDa

Background

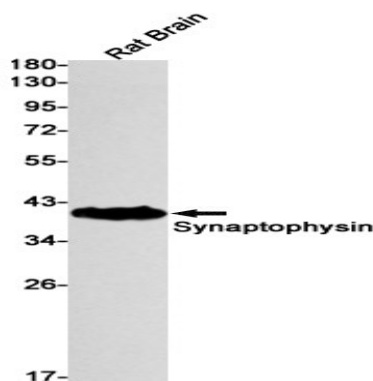
**Product Name: Synaptophysin (10B17) Rabbit
Monoclonal Antibody
Catalog #: AMRe18494**



SYP Possibly involved in structural functions as organizing other membrane components or in targeting the vesicles to the plasma membrane. Involved in the regulation of short-term and long-term synaptic plasticity. Belongs to the synaptophysin/synaptobrevin family. Homohexamer or homotetramer. Note: This description may include information from UniProtKB. Possibly involved in structural functions as organizing other membrane components or in targeting the vesicles to the plasma membrane. Involved in the regulation of short-term and long-term synaptic plasticity (By similarity).

Research Area

Image Data



Western blot detection of Synaptophysin in Rat Brain lysates using Synaptophysin antibody(1:1000 diluted).

Note

For research use only.