

Product Name: Staufen (11R2) Rabbit Monoclonal Antibody
Catalog #: AMRe18374

Summary

Production Name	Staufen (11R2) Rabbit Monoclonal Antibody
Description	Rabbit Monoclonal Antibody
Host	Rabbit
Application	WB
Reactivity	Human,Mouse,Rat

Performance

Conjugation	Unconjugated
Modification	Unmodified
Isotype	IgG
Clonality	Monoclonal
Form	Liquid
Storage	Store at 4°C short term. Aliquot and store at -20°C long term. Avoid freeze/thaw cycles.
Buffer	Supplied in 50mM Tris-Glycine(pH 7.4), 0.15M NaCl, 40%Glycerol, 0.01% New type preservative N and 0.05% BSA.
Purification	Affinity purification

Immunogen

Gene Name	STAU1
Alternative Names	Double-stranded RNA-binding protein Staufen homolog 1; PPP1R150; STAU; staufen; Staufen RNA binding protein (Drosophila); Staufen, Drosophila, homolog of, 1;
Gene ID	6780.0
SwissProt ID	O95793.A synthetic peptide of human Staufen

Application

Dilution Ratio	WB: 1:1000-1:5000
Molecular Weight	63kDa

Product Name: Staufen (11R2) Rabbit Monoclonal Antibody
Catalog #: AMRe18374



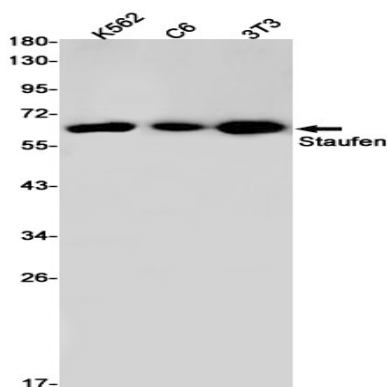
Background

Binds double-stranded RNA (regardless of the sequence) and tubulin. May play a role in specific positioning of mRNAs at given sites in the cell by cross-linking cytoskeletal and RNA components, and in stimulating their translation at the site.

Binds double-stranded RNA (regardless of the sequence) and tubulin. May play a role in specific positioning of mRNAs at given sites in the cell by cross-linking cytoskeletal and RNA components, and in stimulating their translation at the site.

Research Area

Image Data



Western blot detection of Staufen in K562,C6,3T3 cell lysates using Staufen antibody(1:1000 diluted).

Note

For research use only.