

Product Name: Stathmin 1 (10E8) Rabbit Monoclonal Antibody
Catalog #: AMRe18370



Summary

Production Name	Stathmin 1 (10E8) Rabbit Monoclonal Antibody
Description	Rabbit Monoclonal Antibody
Host	Rabbit
Application	WB,ELISA
Reactivity	Human,Mouse,Rat

Performance

Conjugation	Unconjugated
Modification	Unmodified
Isotype	IgG
Clonality	Monoclonal
Form	Liquid
Storage	Store at 4°C short term. Aliquot and store at -20°C long term. Avoid freeze/thaw cycles.
Buffer	Rabbit IgG in phosphate buffered saline , pH 7.4, 150mM NaCl, 0.02% New type preservative N and 50% glycerol. Store at +4°C short term. Store at -20°C long term. Avoid freeze / thaw cycle.
Purification	Affinity purification

Immunogen

Gene Name	STMN1
Alternative Names	LAG; LAP18; Leukemia-associated gene protein; Metablastin; Oncoprotein 18; Op18; Phosphoprotein p19; pp17; pp19; PR22; Pr22 protein; Prosolin;SMN;Stathmin1;STMN1;
Gene ID	3925.0
SwissProt ID	P16949.

Application

Dilution Ratio	WB 1:500-1:2000
Molecular Weight	17kDa

Product Name: Stathmin 1 (10E8) Rabbit Monoclonal Antibody
Catalog #: AMRe18370

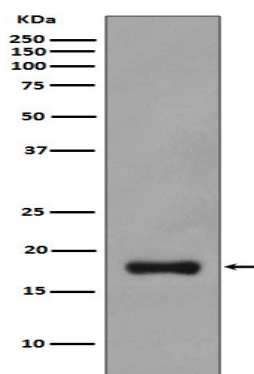


Background

Involved in the regulation of the microtubule (MT) filament system by destabilizing microtubules. Prevents assembly and promotes disassembly of microtubules. Phosphorylation at Ser-16 may be required for axon formation during neurogenesis. Involved in the control of the learned and innate fear. Involved in the regulation of the microtubule (MT) filament system by destabilizing microtubules. Prevents assembly and promotes disassembly of microtubules. Phosphorylation at Ser-16 may be required for axon formation during neurogenesis. Involved in the control of the learned and innate fear (By similarity).

Research Area

Image Data



Western blot analysis of Stathmin 1 expression in PC-12 cell lysate.

Note

For research use only.