

Product Name: SOX1 (8H16) Rabbit Monoclonal Antibody
Catalog #: AMRe18122

Summary

Production Name	SOX1 (8H16) Rabbit Monoclonal Antibody
Description	Rabbit Monoclonal Antibody
Host	Rabbit
Application	WB,ELISA
Reactivity	Human,Mouse

Performance

Conjugation	Unconjugated
Modification	Unmodified
Isotype	IgG
Clonality	Monoclonal
Form	Liquid
Storage	Store at 4°C short term. Aliquot and store at -20°C long term. Avoid freeze/thaw cycles.
Buffer	Rabbit IgG in phosphate buffered saline , pH 7.4, 150mM NaCl, 0.02% New type preservative N and 50% glycerol. Store at +4°C short term. Store at -20°C long term. Avoid freeze / thaw cycle.
Purification	Affinity purification

Immunogen

Gene Name	SOX1
Alternative Names	Sex determining region Y box 1; sox1; SRY; SRY box containing gene 1; SRY related HMG box gene 1; Transcription factor Sox-1;
Gene ID	6656.0
SwissProt ID	O00570.

Application

Dilution Ratio	WB 1:1000-1:2000
Molecular Weight	39kDa

Product Name: SOX1 (8H16) Rabbit Monoclonal Antibody
Catalog #: AMRe18122

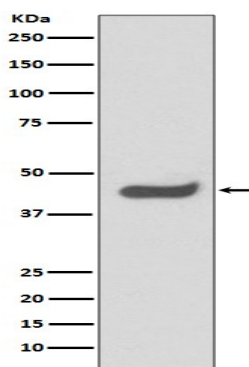


Background

Sox (Sry-related box) genes encode a family of transcription factors that play a myriad of roles in developmental processes. Sox1 and Sox2 are the earliest markers that identify neuroectodermal tissue, and these markers, together with Sox9 collectively mark neuronal stem cells (NSC's) that are present in neurogenically active areas of the mature rodent brain. Sox1 is thought to maintain the cell cycle and promote self renewal in NSCs. Transcriptional activator. May function as a switch in neuronal development. Keeps neural cells undifferentiated by counteracting the activity of proneural proteins and suppresses neuronal differentiation (By similarity).

Research Area

Image Data



Western blot analysis of SOX1 expression in HeLa cell lysate.

Note

For research use only.