

Product Name: SOCS2 (3T6) Rabbit Monoclonal Antibody
Catalog #: AMRe18090

Summary

Production Name	SOCS2 (3T6) Rabbit Monoclonal Antibody
Description	Rabbit Monoclonal Antibody
Host	Rabbit
Application	WB
Reactivity	Human

Performance

Conjugation	Unconjugated
Modification	Unmodified
Isotype	IgG
Clonality	Monoclonal
Form	Liquid
Storage	Store at 4°C short term. Aliquot and store at -20°C long term. Avoid freeze/thaw cycles.
Buffer	Supplied in 50mM Tris-Glycine(pH 7.4), 0.15M NaCl, 40%Glycerol, 0.01% New type preservative N and 0.05% BSA.
Purification	Affinity purification

Immunogen

Gene Name	SOCS2
Alternative Names	CIS2; Cish2; Socs2; SSI2; STATI2;
Gene ID	8835.0
SwissProt ID	O14508.A synthetic peptide of human SOCS2

Application

Dilution Ratio	WB: 1:1000-1:5000
Molecular Weight	22kDa

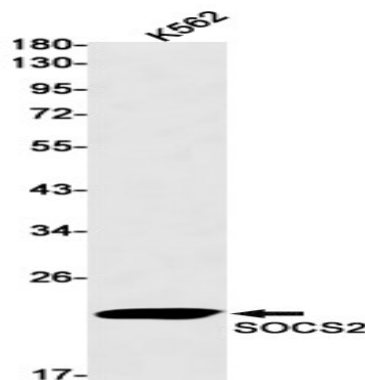
Background

Product Name: SOCS2 (3T6) Rabbit Monoclonal Antibody
Catalog #: AMRe18090

SOCS family proteins form part of a classical negative feedback system that regulates cytokine signal transduction. SOCS2 appears to be a negative regulator in the growth hormone/IGF1 signaling pathway. SOCS family proteins form part of a classical negative feedback system that regulates cytokine signal transduction. SOCS2 appears to be a negative regulator in the growth hormone/IGF1 signaling pathway. Probable substrate recognition component of a SCF-like ECS (Elongin BC-CUL2/5-SOCS-box protein) E3 ubiquitin-protein ligase complex which mediates the ubiquitination and subsequent proteasomal degradation of target proteins.

Research Area

Image Data



Western blot detection of SOCS2 in K562 cell lysates using SOCS2 antibody(1:1000 diluted).

Note

For research use only.