

**Product Name: SLC12A1 / NKCC2 (7C8) Rabbit
Monoclonal Antibody
Catalog #: AMRe17952**

Summary

| | |
|------------------------|--|
| Production Name | SLC12A1 / NKCC2 (7C8) Rabbit Monoclonal Antibody |
| Description | Rabbit Monoclonal Antibody |
| Host | Rabbit |
| Application | WB |
| Reactivity | Human,Mouse,Rat |

Performance

| | |
|---------------------|--|
| Conjugation | Unconjugated |
| Modification | Unmodified |
| Isotype | IgG |
| Clonality | Monoclonal |
| Form | Liquid |
| Storage | Store at 4°C short term. Aliquot and store at -20°C long term. Avoid freeze/thaw cycles. |
| Buffer | Supplied in 50mM Tris-Glycine(pH 7.4), 0.15M NaCl, 40%Glycerol, 0.01% New type preservative N and 0.05% BSA. |
| Purification | Affinity purification |

Immunogen

| | |
|--------------------------|---|
| Gene Name | SLC12A1 |
| Alternative Names | BSC1; NKCC2; Slc12a1; |
| Gene ID | 6557.0 |
| SwissProt ID | Q13621.Recombinant protein of human NKCC2 |

Application

| | |
|-------------------------|---------------------|
| Dilution Ratio | WB: 1:1000 -1:10000 |
| Molecular Weight | 122kDa |

Background

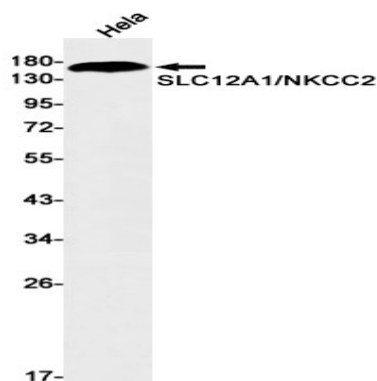
**Product Name: SLC12A1 / NKCC2 (7C8) Rabbit
Monoclonal Antibody
Catalog #: AMRe17952**



May play an important role in cell growth and/or transcription. Renal sodium, potassium and chloride ion cotransporter that mediates the transepithelial NaCl reabsorption in the thick ascending limb and plays an essential role in the urinary concentration and volume regulation. Electrically silent transporter system.

Research Area

Image Data



Western blot detection of SLC12A1/NKCC2 in HeLa cell lysates using SLC12A1/NKCC2 antibody(1:1000 diluted).

Note

For research use only.