

**Product Name: Septin 8 (18E13) Rabbit Monoclonal Antibody**  
**Catalog #: AMRe17745**

---

## Summary

<b>Production Name</b>	Septin 8 (18E13) Rabbit Monoclonal Antibody
<b>Description</b>	Rabbit Monoclonal Antibody
<b>Host</b>	Rabbit
<b>Application</b>	WB
<b>Reactivity</b>	Human,Mouse,Rat

## Performance

<b>Conjugation</b>	Unconjugated
<b>Modification</b>	Unmodified
<b>Isotype</b>	IgG
<b>Clonality</b>	Monoclonal
<b>Form</b>	Liquid
<b>Storage</b>	Store at 4°C short term. Aliquot and store at -20°C long term. Avoid freeze/thaw cycles.
<b>Buffer</b>	Supplied in 50mM Tris-Glycine(pH 7.4), 0.15M NaCl, 40%Glycerol, 0.01% New type preservative N and 0.05% BSA.
<b>Purification</b>	Affinity purification

## Immunogen

<b>Gene Name</b>	SEPTIN8
<b>Alternative Names</b>	SEP2; SEPT8; Septin8;
<b>Gene ID</b>	23176.0
<b>SwissProt ID</b>	Q92599.A synthetic peptide of human Septin 8

## Application

<b>Dilution Ratio</b>	WB: 1:1000
<b>Molecular Weight</b>	56kDa

## Background

---

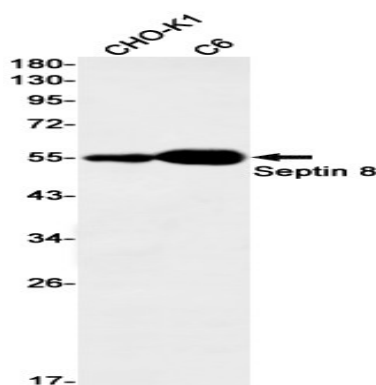
**Product Name: Septin 8 (18E13) Rabbit Monoclonal Antibody**  
**Catalog #: AMRe17745**



Septin 8 (SEPT8) is a member of the highly conserved septin family. Septins are 40- to 60-kD GTPases that assemble as filamentous scaffolds. They are involved in the organization of submembranous structures, in neuronal polarity, and in vesicle trafficking. There are 3 isoforms produced by alternative splicing. Filament-forming cytoskeletal GTPase (By similarity). May play a role in platelet secretion (PubMed:<a href="http://www.uniprot.org/citations/15116257" target="\_blank">15116257</a>). Seems to participate in the process of SNARE complex formation in synaptic vesicles (By similarity).

## Research Area

## Image Data



Western blot detection of Septin 8 in CHO-K1,C6 cell lysates using Septin 8 antibody(1:1000 diluted).

## Note

For research use only.