

**Product Name: RNA polymerase beta (10U4) Rabbit Monoclonal Antibody**  
**Catalog #: AMRe17272**

---



## Summary

<b>Production Name</b>	RNA polymerase beta (10U4) Rabbit Monoclonal Antibody
<b>Description</b>	Rabbit Monoclonal Antibody
<b>Host</b>	Rabbit
<b>Application</b>	WB,ELISA
<b>Reactivity</b>	Escherichia coli

## Performance

<b>Conjugation</b>	Unconjugated
<b>Modification</b>	Unmodified
<b>Isotype</b>	IgG
<b>Clonality</b>	Monoclonal
<b>Form</b>	Liquid
<b>Storage</b>	Store at 4°C short term. Aliquot and store at -20°C long term. Avoid freeze/thaw cycles.
<b>Buffer</b>	Rabbit IgG in phosphate buffered saline , pH 7.4, 150mM NaCl, 0.02% New type preservative N and 50% glycerol. Store at +4°C short term. Store at -20°C long term. Avoid freeze / thaw cycle.
<b>Purification</b>	Affinity purification

## Immunogen

<b>Gene Name</b>	rpoB
<b>Alternative Names</b>	groN; nitB; rif; RNA pol beta; RNA polymerase subunit beta; ron; rpoB; stl; stv; tabD; Transcriptase subunit beta;
<b>Gene ID</b>	61756339;948488
<b>SwissProt ID</b>	P0A8V2.

## Application

<b>Dilution Ratio</b>	WB 1:500-1:2000
<b>Molecular Weight</b>	151kDa

**Product Name: RNA polymerase beta (10U4) Rabbit  
Monoclonal Antibody  
Catalog #: AMRe17272**

---

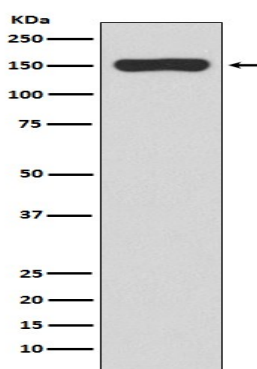


## Background

RNA polymerase beta (rpoB) is the  $\beta$  subunit of the bacterial RNA polymerase and is the subunit which possesses the polymerase activity. This protein is a highly conserved enzyme contained by many bacteria and has been reported as a useful marker for studies in bacterial identification and ecology. DNA-dependent RNA polymerase (RNAP) catalyzes the transcription of DNA into RNA using the four ribonucleoside triphosphates as substrates.

## Research Area

## Image Data



Western blot analysis of RNA polymerase beta expression in E.coli lysate.

## Note

For research use only.