

Product Name: RAB22A (5R13) Rabbit Monoclonal Antibody
Catalog #: AMRe16780

Summary

Production Name	RAB22A (5R13) Rabbit Monoclonal Antibody
Description	Rabbit Monoclonal Antibody
Host	Rabbit
Application	WB
Reactivity	Human,Mouse,Rat

Performance

Conjugation	Unconjugated
Modification	Unmodified
Isotype	IgG
Clonality	Monoclonal
Form	Liquid
Storage	Store at 4°C short term. Aliquot and store at -20°C long term. Avoid freeze/thaw cycles.
Buffer	Supplied in 50mM Tris-Glycine(pH 7.4), 0.15M NaCl, 40%Glycerol, 0.01% New type preservative N and 0.05% BSA.
Purification	Affinity purification

Immunogen

Gene Name	RAB22A
Alternative Names	Rab22; RAB22A;
Gene ID	57403.0
SwissProt ID	Q9UL26.A synthetic peptide of human RAB22A

Application

Dilution Ratio	WB: 1:1000
Molecular Weight	22kDa

Background

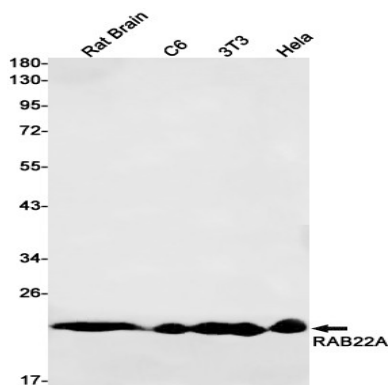
Product Name: RAB22A (5R13) Rabbit Monoclonal Antibody
Catalog #: AMRe16780



Plays a role in endocytosis and intracellular protein transport. Mediates trafficking of TF from early endosomes to recycling endosomes (PubMed:16537905). Plays a role in endocytosis and intracellular protein transport. Mediates trafficking of TF from early endosomes to recycling endosomes (PubMed:16537905). Required for NGF-mediated endocytosis of NTRK1, and subsequent neurite outgrowth (PubMed:21849477). Binds GTP and GDP and has low GTPase activity. Alternates between a GTP-bound active form and a GDP-bound inactive form (PubMed:16537905).

Research Area

Image Data



Western blot detection of RAB22A in Rat Brain,C6,3T3,HeLa cell lysates using RAB22A antibody(1:1000 diluted).

Note

For research use only.