

**Product Name: Prolactin Receptor (2K9) Rabbit
Monoclonal Antibody
Catalog #: AMRe16522**

Summary

Production Name	Prolactin Receptor (2K9) Rabbit Monoclonal Antibody
Description	Rabbit Monoclonal Antibody
Host	Rabbit
Application	WB,ELISA
Reactivity	Human,Mouse,Rat

Performance

Conjugation	Unconjugated
Modification	Unmodified
Isotype	IgG
Clonality	Monoclonal
Form	Liquid
Storage	Store at 4°C short term. Aliquot and store at -20°C long term. Avoid freeze/thaw cycles.
Buffer	Rabbit IgG in phosphate buffered saline , pH 7.4, 150mM NaCl, 0.02% New type preservative N and 50% glycerol. Store at +4°C short term. Store at -20°C long term. Avoid freeze / thaw cycle.
Purification	Affinity purification

Immunogen

Gene Name	PRLR
Alternative Names	CPRLP; HPRL; hPRL receptor; Lactogen receptor; MFAB; OPR; Pr-1; Pr-3; PRLR; Prolactin receptor a;
Gene ID	5618.0
SwissProt ID	P16471.

Application

Dilution Ratio	WB 1:500-1:2000
Molecular Weight	70kDa

**Product Name: Prolactin Receptor (2K9) Rabbit
Monoclonal Antibody
Catalog #: AMRe16522**

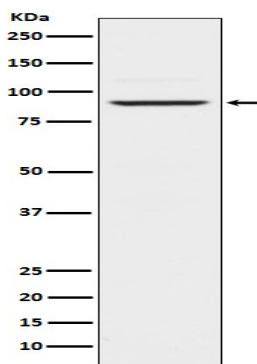


Background

Activate multiple signal transduction pathways in breast cancer cells, including the Jak/Stat, PI3K/Akt, and MAPK pathways, leading to both pro-proliferative and anti-apoptotic downstream effects. This is a receptor for the anterior pituitary hormone prolactin (PRL). Acts as a prosurvival factor for spermatozoa by inhibiting sperm capacitation through suppression of SRC kinase activation and stimulation of AKT. Isoform 4 is unable to transduce prolactin signaling. Isoform 6 is unable to transduce prolactin signaling.

Research Area

Image Data



Western blot analysis of Prolactin Receptor expression in Jurkat cell lysate.

Note

For research use only.