

Product Name: PMF1 (19K12) Rabbit Monoclonal Antibody
Catalog #: AMRe16303

Summary

| | |
|------------------------|---|
| Production Name | PMF1 (19K12) Rabbit Monoclonal Antibody |
| Description | Rabbit Monoclonal Antibody |
| Host | Rabbit |
| Application | WB |
| Reactivity | Human,Mouse,Rat |

Performance

| | |
|---------------------|--|
| Conjugation | Unconjugated |
| Modification | Unmodified |
| Isotype | IgG |
| Clonality | Monoclonal |
| Form | Liquid |
| Storage | Store at 4°C short term. Aliquot and store at -20°C long term. Avoid freeze/thaw cycles. |
| Buffer | Supplied in 50mM Tris-Glycine(pH 7.4), 0.15M NaCl, 40%Glycerol, 0.01% New type preservative N and 0.05% BSA. |
| Purification | Affinity purification |

Immunogen

| | |
|--------------------------|---|
| Gene Name | PMF1 {ECO:0000312 EMBL:AAH65031.1} |
| Alternative Names | Pmf1; Polyamine modulated factor 1; |
| Gene ID | 100527963;11243 |
| SwissProt ID | Q6P1K2.Recombinant protein of human PMF-1 |

Application

| | |
|-------------------------|------------|
| Dilution Ratio | WB: 1:1000 |
| Molecular Weight | 23kDa |

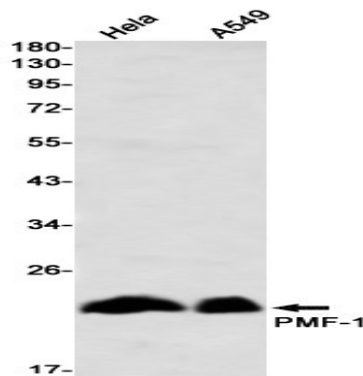
Background

Product Name: PMF1 (19K12) Rabbit Monoclonal Antibody
Catalog #: AMRe16303

Part of the MIS12 complex which is required for normal chromosome alignment and segregation and kinetochore formation during mitosis. May act as a cotranscription partner of NFE2L2 involved in regulation of polyamine-induced transcription of SSAT. Part of the MIS12 complex which is required for normal chromosome alignment and segregation and kinetochore formation during mitosis. May act as a cotranscription partner of NFE2L2 involved in regulation of polyamine-induced transcription of SSAT.

Research Area

Image Data



Western blot detection of PMF-1 in HeLa,A549 using PMF-1 antibody(1:1000 diluted)

Note

For research use only.