

**Product Name: Placental alkaline phosphatase (PLAP)
(2D4) Rabbit Monoclonal Antibody**
Catalog #: AMRe16234



Summary

Production Name	Placental alkaline phosphatase (PLAP) (2D4) Rabbit Monoclonal Antibody
Description	Rabbit Monoclonal Antibody
Host	Rabbit
Application	WB
Reactivity	Human

Performance

Conjugation	Unconjugated
Modification	Unmodified
Isotype	IgG
Clonality	Monoclonal
Form	Liquid
Storage	Store at 4°C short term. Aliquot and store at -20°C long term. Avoid freeze/thaw cycles.
Buffer	Supplied in 50mM Tris-Glycine(pH 7.4), 0.15M NaCl, 40%Glycerol, 0.01% New type preservative N and 0.05% BSA.
Purification	Affinity purification

Immunogen

Gene Name	ALPP
Alternative Names	Alkaline phosphatase, placental type; Alkaline phosphatase Regan isozyme; Placental alkaline phosphatase 1; PLAP-1; ALPP; PLAP;
Gene ID	250.0
SwissProt ID	P05187.A synthetic peptide of human Placental alkaline phosphatase (phospho LAP)

Application

Dilution Ratio	WB: 1:2000-1:10000
Molecular Weight	58kDa

**Product Name: Placental alkaline phosphatase (PLAP)
(2D4) Rabbit Monoclonal Antibody**
Catalog #: AMRe16234

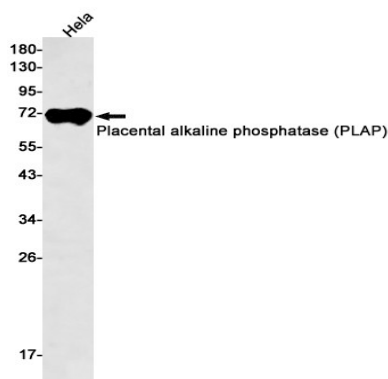


Background

PLAP may assist in guiding migratory cells and transporting specific molecules, such as fatty acids and immunoglobulins, across the plasma membrane. The three tissue-specific APs identified in human, PLAP, germ cell AP (GCAP) and intestinal AP, are 90-98% homologous and their genes are clustered on chromosome 2q. Alkaline phosphatase that can hydrolyze various phosphate compounds.

Research Area

Image Data



Western blot detection of Placental alkaline phosphatase (PLAP) in HeLa cell lysates using Placental alkaline phosphatase (PLAP) antibody(1:500 diluted).

Note

For research use only.