

Product Name: PKC (12X1) Rabbit Monoclonal Antibody
Catalog #: AMRe16189



Summary

Production Name	PKC (12X1) Rabbit Monoclonal Antibody
Description	Rabbit Monoclonal Antibody
Host	Rabbit
Application	WB
Reactivity	Human,Mouse,Rat

Performance

Conjugation	Unconjugated
Modification	Unmodified
Isotype	IgG
Clonality	Monoclonal
Form	Liquid
Storage	Store at 4°C short term. Aliquot and store at -20°C long term. Avoid freeze/thaw cycles.
Buffer	Supplied in 50mM Tris-Glycine(pH 7.4), 0.15M NaCl, 40%Glycerol, 0.01% New type preservative N and 0.05% BSA.
Purification	Affinity purification

Immunogen

Gene Name

PKC alpha; PKC beta; PKC delta; PKC epsilon; PKC gamma; PKC zeta; PKC-A; PKC-alpha; PKC2; PKCA; PKCB; PKCD; PKCE; PKCG; PRKCA; PRKCB; PRKCB1; PRKCB2; PRKCD; PRKCE; PRKCG; PRKCZ; Protein kinase C alpha; Protein kinase C alpha type; Protein kinase C; Protein kinase C beta; Protein kinase C delta; Protein kinase C epsilon; Protein kinase C gamma; Protein kinase C zeta;

Alternative Names

Gene ID

SwissProt ID

P05129/P05771/ P17252/Q02156/Q05513/Q05655.Recombinant protein of human PKC

Application

Dilution Ratio	WB: 1:1000
-----------------------	------------

Product Name: PKC (12X1) Rabbit Monoclonal Antibody
Catalog #: AMRe16189



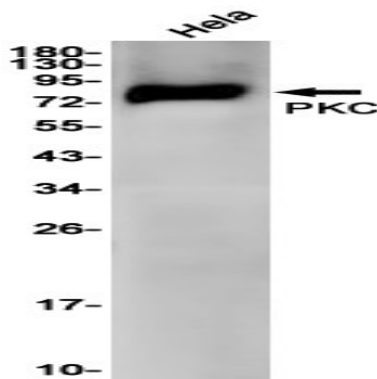
Molecular Weight 78kDa

Background

Calcium-activated, phospholipid- and diacylglycerol (DAG)-dependent serine/threonine-protein kinase that is involved in positive and negative regulation of cell proliferation, apoptosis, differentiation, migration and adhesion, tumorigenesis, cardiac hypertrophy, angiogenesis, platelet function and inflammation, by directly phosphorylating targets such as RAF1, BCL2, CSPG4, TNNT2/CTNT, or activating signaling cascade involving MAPK1/3 (ERK1/2) and RAP1GAP.

Research Area

Image Data



Western blot detection of PKC in HeLa cell lysates using PKC antibody(1:1000 diluted).

Note

For research use only.