

Product Name: PGC1 beta (19E7) Rabbit Monoclonal Antibody
Catalog #: AMRe16024



Summary

Production Name	PGC1 beta (19E7) Rabbit Monoclonal Antibody
Description	Rabbit Monoclonal Antibody
Host	Rabbit
Application	WB,ELISA
Reactivity	Human,Mouse,Rat

Performance

Conjugation	Unconjugated
Modification	Unmodified
Isotype	IgG
Clonality	Monoclonal
Form	Liquid
Storage	Store at 4°C short term. Aliquot and store at -20°C long term. Avoid freeze/thaw cycles.
Buffer	Rabbit IgG in phosphate buffered saline , pH 7.4, 150mM NaCl, 0.02% New type preservative N and 50% glycerol. Store at +4°C short term. Store at -20°C long term. Avoid freeze / thaw cycle.
Purification	Affinity purification

Immunogen

Gene Name	PPARGC1B
Alternative Names	PERC; PGC1; PPARGC1; Ppargc1b;
Gene ID	133522.0
SwissProt ID	Q86YN6.

Application

Dilution Ratio	WB 1:500-1:2000
Molecular Weight	113kDa

Product Name: PGC1 beta (19E7) Rabbit Monoclonal Antibody
Catalog #: AMRe16024

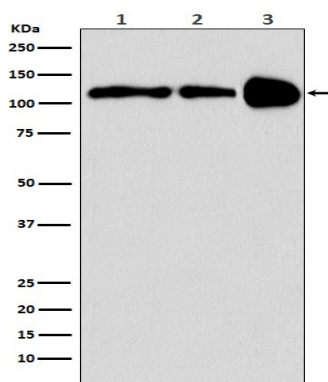


Background

Plays a role of stimulator of transcription factors and nuclear receptors activities. Activates transcriptional activity of estrogen receptor alpha, nuclear respiratory factor 1 (NRF1) and glucocorticoid receptor in the presence of glucocorticoids. Plays a role of stimulator of transcription factors and nuclear receptors activities. Activates transcriptional activity of estrogen receptor alpha, nuclear respiratory factor 1 (NRF1) and glucocorticoid receptor in the presence of glucocorticoids. May play a role in constitutive non-adrenergic-mediated mitochondrial biogenesis as suggested by increased basal oxygen consumption and mitochondrial number when overexpressed. May be involved in fat oxidation and non-oxidative glucose metabolism and in the regulation of energy expenditure. Induces the expression of PERM1 in the skeletal muscle in an ESRRA-dependent manner.

Research Area

Image Data



Western blot analysis of PGC1 beta expression in (1) HeLa cell lysate; (2) Mouse spleen lysate; (3) Rat spleen lysate.

Note

For research use only.