

Product Name: Paxillin (5M15) Rabbit Monoclonal Antibody
Catalog #: AMRe15800

Summary

Production Name	Paxillin (5M15) Rabbit Monoclonal Antibody
Description	Rabbit Monoclonal Antibody
Host	Rabbit
Application	WB
Reactivity	Human,Mouse,Rat

Performance

Conjugation	Unconjugated
Modification	Unmodified
Isotype	IgG
Clonality	Monoclonal
Form	Liquid
Storage	Store at 4°C short term. Aliquot and store at -20°C long term. Avoid freeze/thaw cycles.
Buffer	Supplied in 50mM Tris-Glycine(pH 7.4), 0.15M NaCl, 40%Glycerol, 0.01% New type preservative N and 0.05% BSA.
Purification	Affinity purification

Immunogen

Gene Name	PXN
Alternative Names	Paired box protein Pax-1; PAX-1; PAXI; paxillin; paxillin alpha;
Gene ID	5829.0
SwissProt ID	P49023.A synthetic peptide of human Paxillin

Application

Dilution Ratio	WB: 1:2000
Molecular Weight	65kDa

Background

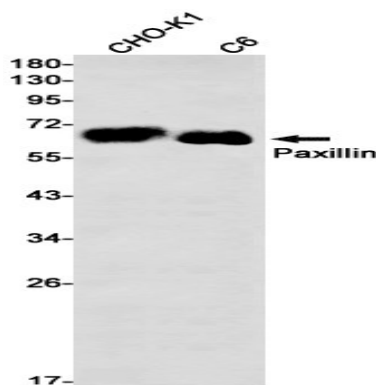
Product Name: Paxillin (5M15) Rabbit Monoclonal Antibody
Catalog #: AMRe15800



Cytoskeletal protein involved in actin-membrane attachment at sites of cell adhesion to the extracellular matrix (focal adhesion). PXN is a multi-domain cytoskeletal protein that localizes primarily to focal adhesion sites to the extracellular matrix. Phosphorylated by focal adhesion kinase (FAK) and is a component of integrin signaling. Its phosphorylation provides docking sites for recruitment of signaling molecules to focal adhesions. Cytoskeletal protein involved in actin-membrane attachment at sites of cell adhesion to the extracellular matrix (focal adhesion).

Research Area

Image Data



Western blot detection of Paxillin in CHO-K1,C6 cell lysates using Paxillin antibody(1:1000 diluted).

Note

For research use only.