

Product Name: pan Cadherin (16E7) Rabbit Monoclonal Antibody
Catalog #: AMRe15721

Summary

Production Name	pan Cadherin (16E7) Rabbit Monoclonal Antibody
Description	Rabbit Monoclonal Antibody
Host	Rabbit
Application	WB
Reactivity	Human,Mouse,Rat

Performance

Conjugation	Unconjugated
Modification	Unmodified
Isotype	IgG
Clonality	Monoclonal
Form	Liquid
Storage	Store at 4°C short term. Aliquot and store at -20°C long term. Avoid freeze/thaw cycles.
Buffer	Supplied in 50mM Tris-Glycine(pH 7.4), 0.15M NaCl, 40%Glycerol, 0.01% New type preservative N and 0.05% BSA.
Purification	Affinity purification

Immunogen

Gene Name	Cadherin;CDH3;CDHP;Cadherin-1;Cadherin-2;Cadherin-3;Cadherin-4;Cadherin-5;CAM 120/80;CD144;CD324;CD325;Cdh4;CDH5;CDHE;CDHN;E-cadherin;N-cadherin;NCAD;Neural cadherin;P-cadherin;Uvomorulin;Vascular endothelial cadherin
Alternative Names	

Gene ID	P12830/P19022/P22223/P33151/P55283/P39038.A synthetic peptide of human pan
SwissProt ID	Cadherin

Application

Product Name: pan Cadherin (16E7) Rabbit Monoclonal Antibody
Catalog #: AMRe15721

Dilution Ratio WB: 1:5000

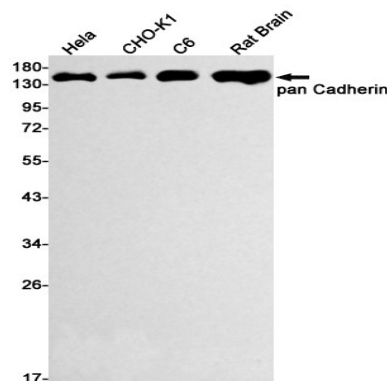
Molecular Weight 100kDa

Background

Cadherins are members of a multigene family of single chain glycoprotein receptors mediating calcium dependent cell-cell adhesion. They play an important role in the growth and development of cells via the mechanisms of control of tissue architecture and the maintenance of tissue integrity. Cadherins are expressed in a tissue specific manner and are required for assembly of cells into solid tissue.

Research Area

Image Data



Western blot detection of pan Cadherin in HeLa, CHO-K1, C6, Rat Brain lysates using pan Cadherin antibody(1:500 diluted).

Note

For research use only.