

**Product Name: p150 CAF1 (19O17) Rabbit Monoclonal Antibody**  
**Catalog #: AMRe15575**

---



## Summary

<b>Production Name</b>	p150 CAF1 (19O17) Rabbit Monoclonal Antibody
<b>Description</b>	Rabbit Monoclonal Antibody
<b>Host</b>	Rabbit
<b>Application</b>	WB
<b>Reactivity</b>	Human

## Performance

<b>Conjugation</b>	Unconjugated
<b>Modification</b>	Unmodified
<b>Isotype</b>	IgG
<b>Clonality</b>	Monoclonal
<b>Form</b>	Liquid
<b>Storage</b>	Store at 4°C short term. Aliquot and store at -20°C long term. Avoid freeze/thaw cycles.
<b>Buffer</b>	Supplied in 50mM Tris-Glycine(pH 7.4), 0.15M NaCl, 40%Glycerol, 0.01% New type preservative N and 0.05% BSA.
<b>Purification</b>	Affinity purification

## Immunogen

<b>Gene Name</b>	CHAF1A
<b>Alternative Names</b>	CAF; CAF1; CAF1P150; CHAF1A; DCAF1; hp15; P150;
<b>Gene ID</b>	10036.0
<b>SwissProt ID</b>	Q13111.A synthetic peptide of human p150 CAF1

## Application

<b>Dilution Ratio</b>	WB: 1:1000
<b>Molecular Weight</b>	107kDa

## Background

---

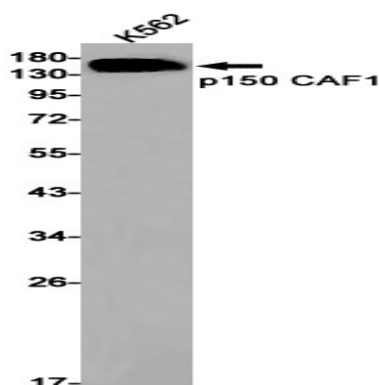
**Product Name: p150 CAF1 (19O17) Rabbit Monoclonal Antibody**  
**Catalog #: AMRe15575**



Core component of the CAF-1 complex, a complex thought to mediate chromatin assembly in DNA replication and DNA repair. Assembles histone octamers onto replicating DNA in vitro. CAF-1 performs the first step of the nucleosome assembly process, bringing newly synthesized histones H3 and H4 to replicating DNA; histones H2A/H2B can bind to this chromatin precursor subsequent to DNA replication to complete the histone octamer. Core component of the CAF-1 complex, a complex that is thought to mediate chromatin assembly in DNA replication and DNA repair. Assembles histone octamers onto replicating DNA in vitro. CAF-1 performs the first step of the nucleosome assembly process, bringing newly synthesized histones H3 and H4 to replicating DNA; histones H2A/H2B can bind to this chromatin precursor subsequent to DNA replication to complete the histone octamer. It may play a role in heterochromatin maintenance in proliferating cells by bringing newly synthesized cbx proteins to heterochromatic DNA replication foci.

## Research Area

## Image Data



Western blot detection of p150 CAF1 in K562 cell lysates using p150 CAF1 antibody(1:1000 diluted).

## Note

For research use only.