

**Product Name: NDUFA1 (6J2) Rabbit Monoclonal Antibody**  
**Catalog #: AMRe14495**

---

## Summary

<b>Production Name</b>	NDUFA1 (6J2) Rabbit Monoclonal Antibody
<b>Description</b>	Rabbit Monoclonal Antibody
<b>Host</b>	Rabbit
<b>Application</b>	WB
<b>Reactivity</b>	Human

## Performance

<b>Conjugation</b>	Unconjugated
<b>Modification</b>	Unmodified
<b>Isotype</b>	IgG
<b>Clonality</b>	Monoclonal
<b>Form</b>	Liquid
<b>Storage</b>	Store at 4°C short term. Aliquot and store at -20°C long term. Avoid freeze/thaw cycles.
<b>Buffer</b>	Supplied in 50mM Tris-Glycine(pH 7.4), 0.15M NaCl, 40%Glycerol, 0.01% New type preservative N and 0.05% BSA.
<b>Purification</b>	Affinity purification

## Immunogen

<b>Gene Name</b>	NDUFA1
<b>Alternative Names</b>	NDUFA1; ZNF183;
<b>Gene ID</b>	4694.0
<b>SwissProt ID</b>	O15239.A synthetic peptide of human NDUFA1

## Application

<b>Dilution Ratio</b>	WB: 1:1000
<b>Molecular Weight</b>	8kDa

## Background

---

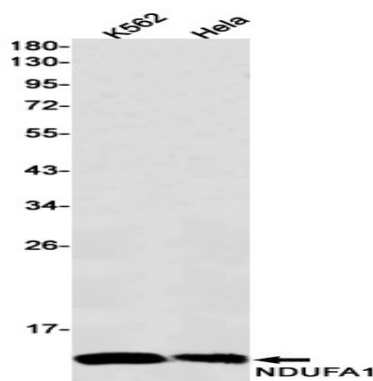
**Product Name: NDUFA1 (6J2) Rabbit Monoclonal Antibody**  
**Catalog #: AMRe14495**

---

Accessory subunit of the mitochondrial membrane respiratory chain NADH dehydrogenase (Complex I), that is believed not to be involved in catalysis. Complex I functions in the transfer of electrons from NADH to the respiratory chain. The immediate electron acceptor for the enzyme is believed to be ubiquinone. Accessory subunit of the mitochondrial membrane respiratory chain NADH dehydrogenase (Complex I), that is believed not to be involved in catalysis. Complex I functions in the transfer of electrons from NADH to the respiratory chain. The immediate electron acceptor for the enzyme is believed to be ubiquinone.

## Research Area

## Image Data



Western blot detection of NDUFA1 in K562, HeLa cell lysates using NDUFA1 antibody (1:1000 diluted).

## Note

For research use only.