

Product Name: MUM1 (9F19) Rabbit Monoclonal Antibody
Catalog #: AMRe14242

Summary

Production Name	MUM1 (9F19) Rabbit Monoclonal Antibody
Description	Rabbit Monoclonal Antibody
Host	Rabbit
Application	WB,ELISA
Reactivity	Human

Performance

Conjugation	Unconjugated
Modification	Unmodified
Isotype	IgG
Clonality	Monoclonal
Form	Liquid
Storage	Store at 4°C short term. Aliquot and store at -20°C long term. Avoid freeze/thaw cycles.
Buffer	Rabbit IgG in phosphate buffered saline , pH 7.4, 150mM NaCl, 0.02% New type preservative N and 50% glycerol. Store at +4°C short term. Store at -20°C long term. Avoid freeze / thaw cycle.
Purification	Affinity purification

Immunogen

Gene Name	IRF4
Alternative Names	LSIRF; Multiple myeloma oncogene 1; NF-EM5; IRF4; MUM1; Transcriptional activator PIP;
Gene ID	3662.0
SwissProt ID	Q15306.

Application

Dilution Ratio	WB 1:1000-1:5000
Molecular Weight	52kDa

Product Name: MUM1 (9F19) Rabbit Monoclonal Antibody
Catalog #: AMRe14242

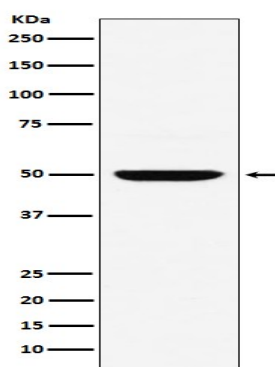


Background

Melanoma associated antigen (mutated) 1 (MUM1, EXPAND1) is a PWWP-domain containing chromatin binding protein involved in maintaining chromatin architecture of interphase chromosomes. Transcriptional activator. Binds to the interferon-stimulated response element (ISRE) of the MHC class I promoter. Binds the immunoglobulin lambda light chain enhancer, together with PU.1. Probably plays a role in ISRE-targeted signal transduction mechanisms specific to lymphoid cells. Involved in CD8(+) dendritic cell differentiation by forming a complex with the BATF-JUNB heterodimer in immune cells, leading to recognition of AICE sequence (5'-TGAnTCA/GAAA- 3'), an immune-specific regulatory element, followed by cooperative binding of BATF and IRF4 and activation of genes (By similarity).

Research Area

Image Data



Western blot analysis of MUM1 expression in Daudi cell lysate.

Note

For research use only.