

Product Name: MHC class I (12X3) Rabbit Monoclonal Antibody
Catalog #: AMRe13878



Summary

Production Name	MHC class I (12X3) Rabbit Monoclonal Antibody
Description	Rabbit Monoclonal Antibody
Host	Rabbit
Application	WB,ELISA
Reactivity	Human

Performance

Conjugation	Unconjugated
Modification	Unmodified
Isotype	IgG
Clonality	Monoclonal
Form	Liquid
Storage	Store at 4°C short term. Aliquot and store at -20°C long term. Avoid freeze/thaw cycles.
Buffer	Rabbit IgG in phosphate buffered saline , pH 7.4, 150mM NaCl, 0.02% New type preservative N and 50% glycerol. Store at +4°C short term. Store at -20°C long term. Avoid freeze / thaw cycle.
Purification	Affinity purification

Immunogen

Gene Name	
Alternative Names	HLA class I histocompatibility; HLA A; HLA B;
Gene ID	
SwissProt ID	P30443/P01889/P01891/P01892/P13746/P16188/P30450.

Application

Dilution Ratio	WB 1:500-1:2000
Molecular Weight	41kDa

Product Name: MHC class I (12X3) Rabbit Monoclonal Antibody
Catalog #: AMRe13878

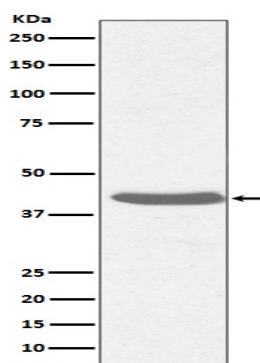


Background

Major histocompatibility complex (MHC) molecules form an integral part of the immune response system. They are cell-surface receptors that bind peptides and present them to T lymphocytes. HLA-A, -B and -C encode membrane anchored heavy chains which heterodimerize with a light chain (b-2-Microglobulin) to form MHC-I. Polymorphisms yield hundreds of HLA-A, -B and -C alleles.

Research Area

Image Data



Western blot analysis of MHC class I expression in Raji cell lysate.

Note

For research use only.