

Product Name: mGluR2 (11P14) Rabbit Monoclonal Antibody
Catalog #: AMRe13858



Summary

Production Name	mGluR2 (11P14) Rabbit Monoclonal Antibody
Description	Rabbit Monoclonal Antibody
Host	Rabbit
Application	WB
Reactivity	Human,Mouse,Rat

Performance

Conjugation	Unconjugated
Modification	Unmodified
Isotype	IgG
Clonality	Monoclonal
Form	Liquid
Storage	Store at 4°C short term. Aliquot and store at -20°C long term. Avoid freeze/thaw cycles.
Buffer	Supplied in 50mM Tris-Glycine(pH 7.4), 0.15M NaCl, 40%Glycerol, 0.01% New type preservative N and 0.05% BSA.
Purification	Affinity purification

Immunogen

Gene Name	GRM2
Alternative Names	GRM2; Glutamate receptor homolog; GPRC1B; MGlu2; Metabotropic; GLUR2; MGLUR2;
Gene ID	2912.0
SwissProt ID	Q14416.A synthetic peptide of human Metabotropic Glutamate Receptor 2

Application

Dilution Ratio	WB: 1:2000-1:10000
Molecular Weight	99kDa

Background

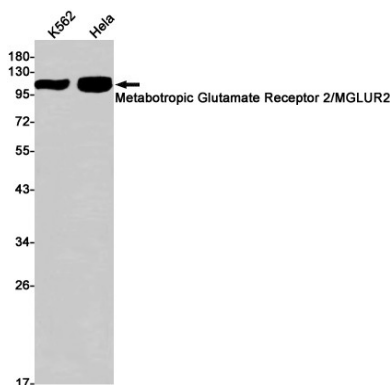
Product Name: mGluR2 (11P14) Rabbit Monoclonal Antibody
Catalog #: AMRe13858



G-protein coupled receptor for glutamate. Ligand binding causes a conformation change that triggers signaling via guanine nucleotide-binding proteins (G proteins) and modulates the activity of down-stream effectors, such as adenylate cyclase. Signaling inhibits adenylate cyclase activity. May mediate suppression of neurotransmission or may be involved in synaptogenesis or synaptic stabilization. G-protein coupled receptor for glutamate. Ligand binding causes a conformation change that triggers signaling via guanine nucleotide-binding proteins (G proteins) and modulates the activity of down-stream effectors, such as adenylate cyclase. Signaling inhibits adenylate cyclase activity. May mediate suppression of neurotransmission or may be involved in synaptogenesis or synaptic stabilization.

Research Area

Image Data



Western blot detection of Metabotropic Glutamate Receptor 2 in K562, HeLa cell lysates using Metabotropic Glutamate Receptor 2 antibody (1:1000 diluted).

Note

For research use only.