

Product Name: MCSF (11G12) Rabbit Monoclonal Antibody
Catalog #: AMRe13736

Summary

Production Name	MCSF (11G12) Rabbit Monoclonal Antibody
Description	Rabbit Monoclonal Antibody
Host	Rabbit
Application	WB
Reactivity	Human,Mouse,Rat

Performance

Conjugation	Unconjugated
Modification	Unmodified
Isotype	IgG
Clonality	Monoclonal
Form	Liquid
Storage	Store at 4°C short term. Aliquot and store at -20°C long term. Avoid freeze/thaw cycles.
Buffer	Supplied in 50mM Tris-Glycine(pH 7.4), 0.15M NaCl, 40%Glycerol, 0.01% New type preservative N and 0.05% BSA.
Purification	Affinity purification

Immunogen

Gene Name	CSF1
Alternative Names	CSF1; Csfm; MCSF; MGC31930; Macrophage colony stimulating factor;
Gene ID	1435.0
SwissProt ID	P09603.A synthetic peptide of human M-CSF

Application

Dilution Ratio	WB: 1:1000
Molecular Weight	60kDa

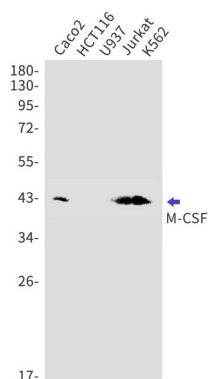
Background

Product Name: MCSF (11G12) Rabbit Monoclonal Antibody
Catalog #: AMRe13736

CSF1, also known as MCSF, is a four- α -helical bundle cytokine that controls the production, differentiation, and function of macrophages. The active form of the protein is found extracellularly as a disulfide-linked homodimer, and is thought to be produced by proteolytic cleavage of membrane-bound precursors. This protein may be involved in development of the placenta. Cytokine that plays an essential role in the regulation of survival, proliferation and differentiation of hematopoietic precursor cells, especially mononuclear phagocytes, such as macrophages and monocytes. Promotes the release of proinflammatory chemokines, and thereby plays an important role in innate immunity and in inflammatory processes. Plays an important role in the regulation of osteoclast proliferation and differentiation, the regulation of bone resorption, and is required for normal bone development. Required for normal male and female fertility. Promotes reorganization of the actin cytoskeleton, regulates formation of membrane ruffles, cell adhesion and cell migration. Plays a role in lipoprotein clearance.

Research Area

Image Data



Western blot detection of M-CSF in Caco2, HCT116, U937, Jurkat, K562 cell lysates using M-CSF antibody (1:1000 diluted).

Note

For research use only.