

Product Name: MARK3 (4Z8) Rabbit Monoclonal Antibody
Catalog #: AMRe13650

Summary

Production Name	MARK3 (4Z8) Rabbit Monoclonal Antibody
Description	Rabbit Monoclonal Antibody
Host	Rabbit
Application	WB
Reactivity	Human,Mouse

Performance

Conjugation	Unconjugated
Modification	Unmodified
Isotype	IgG
Clonality	Monoclonal
Form	Liquid
Storage	Store at 4°C short term. Aliquot and store at -20°C long term. Avoid freeze/thaw cycles.
Buffer	Rabbit IgG in phosphate buffered saline , pH 7.4, 150mM NaCl, 0.02% New type preservative N and 50% glycerol. Store at +4°C short term. Store at -20°C long term. Avoid freeze / thaw cycle.
Purification	Affinity purification

Immunogen

Gene Name	MARK3
Alternative Names	C-TAK1; cTAK1; Emk2; KP78; Mark3; PAR1A;
Gene ID	4140.0
SwissProt ID	P27448.

Application

Dilution Ratio	WB 1:500-1:2000
Molecular Weight	84kDa

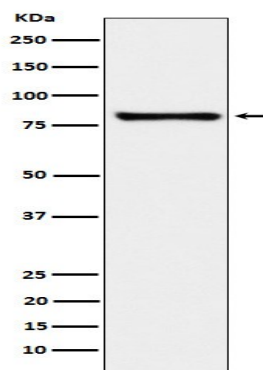
Product Name: MARK3 (4Z8) Rabbit Monoclonal Antibody
Catalog #: AMRe13650

Background

Involved in the specific phosphorylation of microtubule-associated proteins for tau, MAP2 and MAP4. Phosphorylates CDC25C on 'Ser-216'. Serine/threonine-protein kinase (PubMed: [23666762](http://www.uniprot.org/citations/23666762)). Involved in the specific phosphorylation of microtubule-associated proteins for MAP2 and MAP4. Phosphorylates the microtubule-associated protein MAPT/TAU (PubMed: [23666762](http://www.uniprot.org/citations/23666762)). Phosphorylates CDC25C on 'Ser-216'. Regulates localization and activity of some histone deacetylases by mediating phosphorylation of HDAC7, promoting subsequent interaction between HDAC7 and 14-3-3 and export from the nucleus (PubMed: [16980613](http://www.uniprot.org/citations/16980613)). Negatively regulates the Hippo signaling pathway and antagonizes the phosphorylation of LATS1. Cooperates with DLG5 to inhibit the kinase activity of STK3/MST2 toward LATS1 (PubMed: [28087714](http://www.uniprot.org/citations/28087714)).

Research Area

Image Data



Western blot analysis of MARK3 expression in K562 cell lysate.

Note

For research use only.