

**Product Name: Maltose Binding Protein (6B6) Rabbit
Monoclonal Antibody
Catalog #: AMRe13610**



Summary

Production Name	Maltose Binding Protein (6B6) Rabbit Monoclonal Antibody
Description	Rabbit Monoclonal Antibody
Host	Rabbit
Application	WB,ELISA
Reactivity	Human,Mouse,Rat

Performance

Conjugation	Unconjugated
Modification	Unmodified
Isotype	IgG
Clonality	Monoclonal
Form	Liquid
Storage	Store at 4°C short term. Aliquot and store at -20°C long term. Avoid freeze/thaw cycles.
Buffer	Rabbit IgG in phosphate buffered saline , pH 7.4, 150mM NaCl, 0.02% New type preservative N and 50% glycerol. Store at +4°C short term. Store at -20°C long term. Avoid freeze / thaw cycle.
Purification	Affinity purification

Immunogen

Gene Name	malE {ECO:0000303 PubMed:4215651}
Alternative Names	MMBP; MalE; Maltose Binding Protein; Maltose binding periplasmic protein;
Gene ID	61753691;948538
SwissProt ID	POAEX9 .

Application

Dilution Ratio	WB 1:1000~1:2000
Molecular Weight	43kDa

**Product Name: Maltose Binding Protein (6B6) Rabbit
Monoclonal Antibody
Catalog #: AMRe13610**

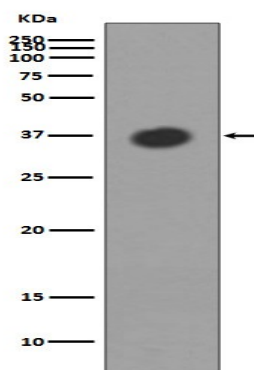


Background

Epitope tagging offers an easy and universal strategy for the identification and purification of proteins derived by recombinant DNA technology. The insertion of a Maltose Binding Protein (MBP) tag creates a stable fusion product that does not interfere with the bioactivity of the protein or with the biodistribution of the MBP tagged product. Cleavage by factor Xa separates MBP from its partner protein. Part of the ABC transporter complex MalEFGK involved in maltose/maltodextrin import. Binds maltose and higher maltodextrins such as maltotriose.

Research Area

Image Data



Western blot analysis of MBP expression in Escherichia coli lysate.

Note

For research use only.