

Product Name: LYRIC (10G11) Rabbit Monoclonal Antibody
Catalog #: AMRe13516

Summary

Production Name	LYRIC (10G11) Rabbit Monoclonal Antibody
Description	Rabbit Monoclonal Antibody
Host	Rabbit
Application	WB
Reactivity	Human,Mouse,Rat

Performance

Conjugation	Unconjugated
Modification	Unmodified
Isotype	IgG
Clonality	Monoclonal
Form	Liquid
Storage	Store at 4°C short term. Aliquot and store at -20°C long term. Avoid freeze/thaw cycles.
Buffer	Supplied in 50mM Tris-Glycine(pH 7.4), 0.15M NaCl, 40%Glycerol, 0.01% New type preservative N and 0.05% BSA.
Purification	Affinity purification

Immunogen

Gene Name	MTDH
Alternative Names	3D3; 3D3/LYRIC; AEG1; Astrocyte elevated gene 1; LYRIC; LYRIC/3D3; Metadherin; MTDH; Protein LYRIC;
Gene ID	92140.0
SwissProt ID	Q86UE4.A synthetic peptide of human LYRIC/AEG1

Application

Dilution Ratio	WB: 1:2000-1:10000
Molecular Weight	64kDa

Product Name: LYRIC (10G11) Rabbit Monoclonal Antibody
Catalog #: AMRe13516

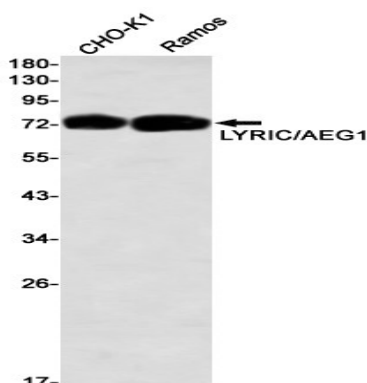


Background

Downregulates SLC1A2/EAAT2 promoter activity when expressed ectopically. Activates the nuclear factor kappa-B (NF-kappa-B) transcription factor. Promotes anchorage-independent growth of immortalized melanocytes and astrocytes which is a key component in tumor cell expansion. Downregulates SLC1A2/EAAT2 promoter activity when expressed ectopically. Activates the nuclear factor kappa-B (NF-kappa-B) transcription factor. Promotes anchorage-independent growth of immortalized melanocytes and astrocytes which is a key component in tumor cell expansion. Promotes lung metastasis and also has an effect on bone and brain metastasis, possibly by enhancing the seeding of tumor cells to the target organ endothelium. Induces chemoresistance.

Research Area

Image Data



Western blot detection of LYRIC/AEG1 in CHO-K1,Ramos using LYRIC/AEG1 antibody(1:1000 diluted).

Note

For research use only.