

Product Name: LMAN1 (16Y11) Rabbit Monoclonal Antibody
Catalog #: AMRe13351

Summary

Production Name	LMAN1 (16Y11) Rabbit Monoclonal Antibody
Description	Rabbit Monoclonal Antibody
Host	Rabbit
Application	WB
Reactivity	Human,Mouse,Rat

Performance

Conjugation	Unconjugated
Modification	Unmodified
Isotype	IgG
Clonality	Monoclonal
Form	Liquid
Storage	Store at 4°C short term. Aliquot and store at -20°C long term. Avoid freeze/thaw cycles.
Buffer	Supplied in 50mM Tris-Glycine(pH 7.4), 0.15M NaCl, 40%Glycerol, 0.01% New type preservative N and 0.05% BSA.
Purification	Affinity purification

Immunogen

Gene Name	LMAN1
Alternative Names	ERGIC53; F5F8D; FMFD1; Gp58; Lman1; MCFD1; MR60;
Gene ID	3998.0
SwissProt ID	P49257.A synthetic peptide of human LMAN1

Application

Dilution Ratio	WB: 1:1000
Molecular Weight	58kDa

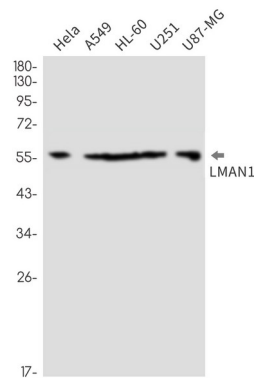
Background

Product Name: LMAN1 (16Y11) Rabbit Monoclonal Antibody
Catalog #: AMRe13351

Mannose-specific lectin. May recognize sugar residues of glycoproteins, glycolipids, or glycosylphosphatidyl inositol anchors and may be involved in the sorting or recycling of proteins, lipids, or both. The LMAN1-MCFD2 complex forms a specific cargo receptor for the ER-to-Golgi transport of selected proteins. Mannose-specific lectin. May recognize sugar residues of glycoproteins, glycolipids, or glycosylphosphatidyl inositol anchors and may be involved in the sorting or recycling of proteins, lipids, or both. The LMAN1-MCFD2 complex forms a specific cargo receptor for the ER-to-Golgi transport of selected proteins.

Research Area

Image Data



Western blot detection of LMAN1 in HeLa, A549, HL-60, U251, U87-MG cell lysates using LMAN1 antibody (1:1000 diluted).

Note

For research use only.