

Product Name: LAMP1 (9E4) Rabbit Monoclonal Antibody
Catalog #: AMRe13207

Summary

Production Name	LAMP1 (9E4) Rabbit Monoclonal Antibody
Description	Rabbit Monoclonal Antibody
Host	Rabbit
Application	WB
Reactivity	Human

Performance

Conjugation	Unconjugated
Modification	Unmodified
Isotype	IgG
Clonality	Monoclonal
Form	Liquid
Storage	Store at 4°C short term. Aliquot and store at -20°C long term. Avoid freeze/thaw cycles.
Buffer	Supplied in 50mM Tris-Glycine(pH 7.4), 0.15M NaCl, 40%Glycerol, 0.01% New type preservative N and 0.05% BSA.
Purification	Affinity purification

Immunogen

Gene Name	LAMP1
Alternative Names	LAMP-1; CD107 antigen-like family member A; CD107a; LAMP1;
Gene ID	3916.0
SwissProt ID	P11279.A synthetic peptide of human LAMP1

Application

Dilution Ratio	WB: 1:1000-1:5000
Molecular Weight	45kDa

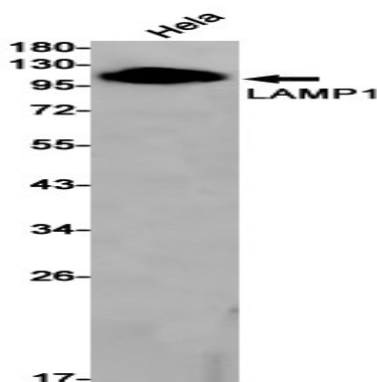
Background

Product Name: LAMP1 (9E4) Rabbit Monoclonal Antibody
Catalog #: AMRe13207

LAMP1 and LAMP2 (lysosome-associated membrane protein 1 and 2) are two abundant lysosomal membrane proteins. Both are transmembrane proteins and heavily glycosylated at the amino-terminal luminal side of the lysosomal inner leaflet, which protects the proteins from proteolysis. The carboxy terminus of LAMP1 is exposed to the cytoplasm and contains a tyrosine sorting motif which targets LAMP1 to lysosomal membranes. Lysosomal membrane glycoprotein which plays an important role in lysosome biogenesis, autophagy, and cholesterol homeostasis (By similarity). Plays also an important role in NK-cells cytotoxicity (PubMed: [23632890](http://www.uniprot.org/citations/23632890) target="_blank">23632890, PubMed: [2022921](http://www.uniprot.org/citations/2022921) target="_blank">2022921). Mechanistically, participates in cytotoxic granule movement to the cell surface and perforin trafficking to the lytic granule (PubMed: [23632890](http://www.uniprot.org/citations/23632890) target="_blank">23632890). In addition, protects NK-cells from degranulation-associated damage induced by their own cytotoxic granule content (PubMed: [23847195](http://www.uniprot.org/citations/23847195) target="_blank">23847195). Presents carbohydrate ligands to selectins. Also implicated in tumor cell metastasis.

Research Area

Image Data



Western blot detection of LAMP1 in HeLa cell lysates using LAMP1 antibody(1:1000 diluted).

Note

For research use only.