

Product Name: IRS1 (17G5) Rabbit Monoclonal Antibody
Catalog #: AMRe12758

Summary

Production Name	IRS1 (17G5) Rabbit Monoclonal Antibody
Description	Rabbit Monoclonal Antibody
Host	Rabbit
Application	WB,ELISA
Reactivity	Human

Performance

Conjugation	Unconjugated
Modification	Unmodified
Isotype	IgG
Clonality	Monoclonal
Form	Liquid
Storage	Store at 4°C short term. Aliquot and store at -20°C long term. Avoid freeze/thaw cycles.
Buffer	Rabbit IgG in phosphate buffered saline , pH 7.4, 150mM NaCl, 0.02% New type preservative N and 50% glycerol. Store at +4°C short term. Store at -20°C long term. Avoid freeze / thaw cycle.
Purification	Affinity purification

Immunogen

Gene Name	IRS1
Alternative Names	HIRS1; Insulin receptor substrate 1; IRS 1; IRS1;
Gene ID	3667.0
SwissProt ID	P35568 .

Application

Dilution Ratio	WB 1:1000-1:2000
Molecular Weight	132kDa

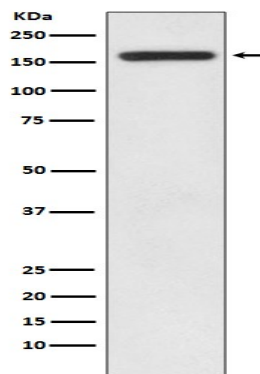
Background

Product Name: IRS1 (17G5) Rabbit Monoclonal Antibody
Catalog #: AMRe12758

IRS1 is one of the major substrates of the insulin receptor kinase. May mediate the control of various cellular processes by insulin. When phosphorylated by the insulin receptor binds specifically to various cellular proteins containing SH2 domains such as phosphatidylinositol 3-kinase p85 subunit or GRB2. May mediate the control of various cellular processes by insulin. When phosphorylated by the insulin receptor binds specifically to various cellular proteins containing SH2 domains such as phosphatidylinositol 3-kinase p85 subunit or GRB2. Activates phosphatidylinositol 3-kinase when bound to the regulatory p85 subunit (By similarity).

Research Area

Image Data



Western blot analysis of IRS1 expression in HEK293 cell lysate.

Note

For research use only.