

**Product Name: Integrin beta 1 (15X9) Rabbit
Monoclonal Antibody
Catalog #: AMRe12658**

Summary

Production Name	Integrin beta 1 (15X9) Rabbit Monoclonal Antibody
Description	Rabbit Monoclonal Antibody
Host	Rabbit
Application	WB,ELISA
Reactivity	Human

Performance

Conjugation	Unconjugated
Modification	Unmodified
Isotype	IgG
Clonality	Monoclonal
Form	Liquid
Storage	Store at 4°C short term. Aliquot and store at -20°C long term. Avoid freeze/thaw cycles.
Buffer	Rabbit IgG in phosphate buffered saline , pH 7.4, 150mM NaCl, 0.02% New type preservative N and 50% glycerol. Store at +4°C short term. Store at -20°C long term. Avoid freeze / thaw cycle.
Purification	Affinity purification

Immunogen

Gene Name	ITGB1
Alternative Names	Integrin β 1, CD29, FN1B, Fibronectin receptor beta subunit, ITB1, Integrin VLA-4 beta subunit, Integrin beta-1 precursor, integrin beta-1
Gene ID	3688.0
SwissProt ID	P05556.

Application

Dilution Ratio	WB 1:500-1:2000
Molecular Weight	88kDa

**Product Name: Integrin beta 1 (15X9) Rabbit
Monoclonal Antibody
Catalog #: AMRe12658**

Background

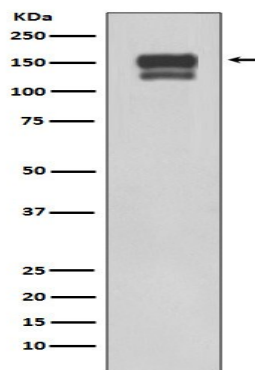
Integrins are α/β heterodimeric cell surface receptors that play a pivotal role in cell adhesion and migration, as well as in growth and survival. The integrin family contains at least 18 α and 8 β subunits that form 24 known integrins with distinct tissue distribution and overlapping ligand specificities. Integrins α -1/ β -1, α -2/ β -1, α -10/ β -1 and α -11/ β -1 are receptors for collagen. Integrins α -1/ β -1 and α -2/ β -2 recognize the proline-hydroxylated sequence G-F-P-G-E-R in collagen. Integrins α -2/ β -1, α -3/ β -1, α -4/ β -1, α -5/ β -1, α -8/ β -1, α -10/ β -1, α -11/ β -1 and α -V/ β -1 are receptors for fibronectin. α -4/ β -1 recognizes one or more domains within the alternatively spliced CS-1 and CS-5 regions of fibronectin. Integrin α -5/ β -1 is a receptor for fibrinogen. Integrin α -1/ β -1, α -2/ β -1, α -6/ β -1 and α -7/ β -1 are receptors for laminin. Integrin α -6/ β -1 (ITGA6:ITGB1) is present in oocytes and is involved in sperm-egg fusion (By similarity). Integrin α -4/ β -1 is a receptor for VCAM1. It recognizes the sequence Q-I-D-S in VCAM1. Integrin α -9/ β -1 is a receptor for VCAM1, cytotactin and osteopontin. It recognizes the sequence A-E-I-D-G-I-E-L in cytotactin. Integrin α -3/ β -1 is a receptor for epiligrin, thrombospondin and CSPG4. α -3/ β -1 may mediate with LGALS3 the stimulation by CSPG4 of endothelial cells migration. Integrin α -V/ β -1 is a receptor for vitronectin. β -1 integrins recognize the sequence R-G-D in a wide array of ligands. When associated with α -7 integrin, regulates cell adhesion and laminin matrix deposition. Involved in promoting endothelial cell motility and angiogenesis. Involved in osteoblast compaction through the fibronectin fibrillogenesis cell-mediated matrix assembly process and the formation of mineralized bone nodules. May be involved in up-regulation of the activity of kinases such as PKC via binding to KRT1. Together with KRT1 and RACK1, serves as a platform for SRC activation or inactivation. Plays a mechanistic adhesive role during telophase, required for the successful completion of cytokinesis. Integrin α -3/ β -1 provides a docking site for FAP (seprase) at invadopodia plasma membranes in a collagen-dependent manner and hence may participate in the adhesion, formation of invadopodia and matrix degradation processes, promoting cell invasion. ITGA4:ITGB1 binds to fractalkine (CX3CL1) and may act as its coreceptor in CX3CR1-dependent fractalkine signaling (PubMed: 23125415, PubMed: 24789099). ITGA4:ITGB1 and ITGA5:ITGB1 bind to PLA2G2A via a site (site 2) which is distinct from the classical ligand-binding site (site 1) and this induces integrin conformational changes and enhanced ligand binding to site 1 (PubMed: 18635536, PubMed: 25398877). ITGA5:ITGB1 acts as a receptor for fibrillin-1 (FBN1) and mediates R-G-D-dependent cell adhesion to FBN1 (PubMed: 12807887, PubMed: 17158881). ITGA5:ITGB1 is a receptor for IL1B and binding is essential for IL1B signaling (PubMed: 29030430). ITGA5:ITGB3 is a receptor for soluble CD40LG and is required for CD40/CD40LG signaling

**Product Name: Integrin beta 1 (15X9) Rabbit
Monoclonal Antibody
Catalog #: AMRe12658**

(PubMed: [31331973](http://www.uniprot.org/citations/31331973)).

Research Area

Image Data



Western blot analysis of using Integrin beta1 expression in 293T cell lysate.

Note

For research use only.