

**Product Name: Inhibin beta B (15X19) Rabbit
Monoclonal Antibody
Catalog #: AMRe12611**

Summary

| | |
|------------------------|---|
| Production Name | Inhibin beta B (15X19) Rabbit Monoclonal Antibody |
| Description | Rabbit Monoclonal Antibody |
| Host | Rabbit |
| Application | WB,ELISA |
| Reactivity | Human,Mouse,Rat |

Performance

| | |
|---------------------|--|
| Conjugation | Unconjugated |
| Modification | Unmodified |
| Isotype | IgG |
| Clonality | Monoclonal |
| Form | Liquid |
| Storage | Store at 4°C short term. Aliquot and store at -20°C long term. Avoid freeze/thaw cycles. |
| Buffer | Rabbit IgG in phosphate buffered saline , pH 7.4, 150mM NaCl, 0.02% New type preservative N and 50% glycerol. Store at +4°C short term. Store at -20°C long term. Avoid freeze / thaw cycle. |
| Purification | Affinity purification |

Immunogen

| | |
|--------------------------|------------------------|
| Gene Name | INHBB |
| Alternative Names | Activin beta B; INHBB; |
| Gene ID | 3625.0 |
| SwissProt ID | P09529. |

Application

| | |
|-------------------------|-----------------|
| Dilution Ratio | WB 1:500-1:2000 |
| Molecular Weight | 45kDa |

**Product Name: Inhibin beta B (15X19) Rabbit
Monoclonal Antibody
Catalog #: AMRe12611**

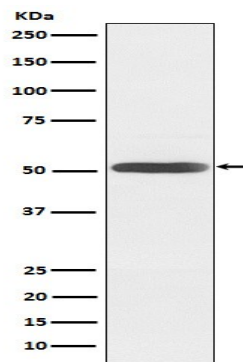


Background

Inhibins and activins inhibit and activate, respectively, the secretion of follitropin by the pituitary gland. Inhibins/activins are involved in regulating a number of diverse functions such as hypothalamic and pituitary hormone secretion, gonadal hormone secretion, germ cell development and maturation, erythroid differentiation, insulin secretion, nerve cell survival, embryonic axial development or bone growth, depending on their subunit composition. Inhibins and activins inhibit and activate, respectively, the secretion of follitropin by the pituitary gland. Inhibins/activins are involved in regulating a number of diverse functions such as hypothalamic and pituitary hormone secretion, gonadal hormone secretion, germ cell development and maturation, erythroid differentiation, insulin secretion, nerve cell survival, embryonic axial development or bone growth, depending on their subunit composition. Inhibins appear to oppose the functions of activins.

Research Area

Image Data



Western blot analysis of Inhibin beta B expression in Mouse brain lysate.

Note

For research use only.