

**Product Name: IKB alpha (6B2) Rabbit Monoclonal Antibody**  
**Catalog #: AMRe12465**

---

## Summary

<b>Production Name</b>	IKB alpha (6B2) Rabbit Monoclonal Antibody
<b>Description</b>	Rabbit Monoclonal Antibody
<b>Host</b>	Rabbit
<b>Application</b>	WB
<b>Reactivity</b>	Human,Mouse,Rat

## Performance

<b>Conjugation</b>	Unconjugated
<b>Modification</b>	Unmodified
<b>Isotype</b>	IgG
<b>Clonality</b>	Monoclonal
<b>Form</b>	Liquid
<b>Storage</b>	Store at 4°C short term. Aliquot and store at -20°C long term. Avoid freeze/thaw cycles.
<b>Buffer</b>	Supplied in 50mM Tris-Glycine(pH 7.4), 0.15M NaCl, 40%Glycerol, 0.01% New type preservative N and 0.05% BSA.
<b>Purification</b>	Affinity purification

## Immunogen

<b>Gene Name</b>	NFKBIA
<b>Alternative Names</b>	I-kappa-B-alpha; NFKBI; NFKBIA; NF-kappaB inhibitor alpha; IKBA; IkappaBalph; MAD3; RL/IF-1;
<b>Gene ID</b>	4792.0
<b>SwissProt ID</b>	P25963.A synthetic peptide of human IKB alpha

## Application

<b>Dilution Ratio</b>	WB: 1:2000
<b>Molecular Weight</b>	36kDa

**Product Name: IKB alpha (6B2) Rabbit Monoclonal Antibody**  
**Catalog #: AMRe12465**

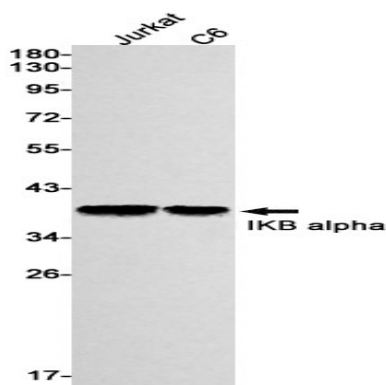


## Background

NFKB1 (MIM 164011) or NFKB2 (MIM 164012) is bound to REL (MIM 164910), RELA (MIM 164014), or RELB (MIM 604758) to form the NFKB complex. The NFKB complex is inhibited by I-kappa-B proteins (NFKBIA or NFKBIB, MIM 604495), which inactivate NF-kappa-B by trapping it in the cytoplasm. Inhibits the activity of dimeric NF-kappa-B/REL complexes by trapping REL dimers in the cytoplasm through masking of their nuclear localization signals. On cellular stimulation by immune and proinflammatory responses, becomes phosphorylated promoting ubiquitination and degradation, enabling the dimeric RELA to translocate to the nucleus and activate transcription.

## Research Area

## Image Data



Western blot detection of IKB alpha in Jurkat,C6 cell lysates using IKB alpha antibody(1:1000 diluted).

## Note

For research use only.