

Product Name: GTF2I (1A17) Rabbit Monoclonal Antibody
Catalog #: AMRe11843

Summary

Production Name	GTF2I (1A17) Rabbit Monoclonal Antibody
Description	Rabbit Monoclonal Antibody
Host	Rabbit
Application	WB
Reactivity	Human,Mouse,Rat

Performance

Conjugation	Unconjugated
Modification	Unmodified
Isotype	IgG
Clonality	Monoclonal
Form	Liquid
Storage	Store at 4°C short term. Aliquot and store at -20°C long term. Avoid freeze/thaw cycles.
Buffer	Supplied in 50mM Tris-Glycine(pH 7.4), 0.15M NaCl, 40%Glycerol, 0.01% New type preservative N and 0.05% BSA.
Purification	Affinity purification

Immunogen

Gene Name	GTF2I
Alternative Names	BAP135; BTKAP1; DIWS; Gtf2i; IB291; SPIN; WBS; WBSCR6;
Gene ID	2969.0
SwissProt ID	P78347.A synthetic peptide of human TFII I

Application

Dilution Ratio	WB: 1:2000-1:10000
Molecular Weight	112kDa

Background

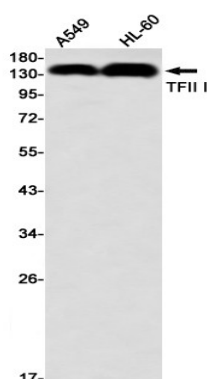
Product Name: GTF2I (1A17) Rabbit Monoclonal Antibody
Catalog #: AMRe11843



Interacts with the basal transcription machinery by coordinating the formation of a multiprotein complex at the C-FOS promoter, and linking specific signal responsive activator complexes. Interacts with the basal transcription machinery by coordinating the formation of a multiprotein complex at the C-FOS promoter, and linking specific signal responsive activator complexes. Promotes the formation of stable high-order complexes of SRF and PHOX1 and interacts cooperatively with PHOX1 to promote serum-inducible transcription of a reporter gene derived by the C-FOS serum response element (SRE). Acts as a coregulator for USF1 by binding independently two promoter elements, a pyrimidine-rich initiator (Inr) and an upstream E-box. Required for the formation of functional ARID3A DNA- binding complexes and for activation of immunoglobulin heavy-chain transcription upon B-lymphocyte activation.

Research Area

Image Data



Western blot detection of TFII I in A549,HL-60 using TFII I antibody(1:1000 diluted)

Note

For research use only.