

**Product Name: Glycophorin A (CD235a) (11C9) Rabbit
Monoclonal Antibody
Catalog #: AMRe11514**



Summary

Production Name	Glycophorin A (CD235a) (11C9) Rabbit Monoclonal Antibody
Description	Rabbit Monoclonal Antibody
Host	Rabbit
Application	WB,ELISA
Reactivity	Human

Performance

Conjugation	Unconjugated
Modification	Unmodified
Isotype	IgG
Clonality	Monoclonal
Form	Liquid
Storage	Store at 4°C short term. Aliquot and store at -20°C long term. Avoid freeze/thaw cycles.
Buffer	Rabbit IgG in phosphate buffered saline , pH 7.4, 150mM NaCl, 0.02% New type preservative N and 50% glycerol. Store at +4°C short term. Store at -20°C long term. Avoid freeze / thaw cycle.
Purification	Affinity purification

Immunogen

Gene Name	GYPA
Alternative Names	CD235a; Glycophorin A; GPA; GPERik; GpMiIII; GYPa; HGpMiIII; HGpMiV; HGpMiX; HGpMiXI; MN sialoglycoprotein; MNS; PAS2;
Gene ID	2993.0
SwissProt ID	P02724.

Application

Dilution Ratio	WB 1:500-1:1000
Molecular Weight	16kDa

**Product Name: Glycophorin A (CD235a) (11C9) Rabbit
Monoclonal Antibody
Catalog #: AMRe11514**

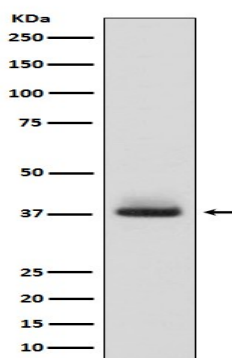


Background

Glycophorin A is the major intrinsic membrane protein of the erythrocyte. The N-terminal glycosylated segment, which lies outside the erythrocyte membrane, has MN blood group receptors. Appears to be important for the function of SLC4A1 and is required for high activity of SLC4A1. Glycophorin A is the major intrinsic membrane protein of the erythrocyte. The N-terminal glycosylated segment, which lies outside the erythrocyte membrane, has MN blood group receptors. Appears to be important for the function of SLC4A1 and is required for high activity of SLC4A1. May be involved in translocation of SLC4A1 to the plasma membrane. Is a receptor for influenza virus. Is a receptor for Plasmodium falciparum erythrocyte-binding antigen 175 (EBA-175); binding of EBA-175 is dependent on sialic acid residues of the O-linked glycans. Appears to be a receptor for Hepatitis A virus (HAV).

Research Area

Image Data



Western blot analysis of Glycophorin A (CD235a) expression in human fetal liver lysate.

Note

For research use only.