

Product Name: Gephyrin (8G16) Rabbit Monoclonal Antibody
Catalog #: AMRe11405



Summary

Production Name	Gephyrin (8G16) Rabbit Monoclonal Antibody
Description	Rabbit Monoclonal Antibody
Host	Rabbit
Application	WB,ELISA
Reactivity	Human,Mouse,Rat

Performance

Conjugation	Unconjugated
Modification	Unmodified
Isotype	IgG
Clonality	Monoclonal
Form	Liquid
Storage	Store at 4°C short term. Aliquot and store at -20°C long term. Avoid freeze/thaw cycles.
Buffer	Rabbit IgG in phosphate buffered saline , pH 7.4, 150mM NaCl, 0.02% New type preservative N and 50% glycerol. Store at +4°C short term. Store at -20°C long term. Avoid freeze / thaw cycle.
Purification	Affinity purification

Immunogen

Gene Name	GPHN
Alternative Names	Domain E; Domain G; GEPH; GPH; GPHN; GPHRYN;
Gene ID	10243.0
SwissProt ID	Q9NQX3.

Application

Dilution Ratio	WB 1:500-1:2000
Molecular Weight	80kDa

Product Name: Gephyrin (8G16) Rabbit Monoclonal Antibody
Catalog #: AMRe11405

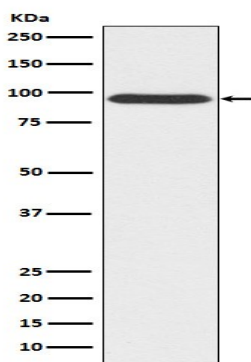


Background

Microtubule-associated protein involved in membrane protein-cytoskeleton interactions. It is thought to anchor the inhibitory glycine receptor (GLYR) to subsynaptic microtubules (By similarity). Catalyzes two steps in the biosynthesis of the molybdenum cofactor. Microtubule-associated protein involved in membrane protein- cytoskeleton interactions. It is thought to anchor the inhibitory glycine receptor (GLYR) to subsynaptic microtubules (By similarity). Acts as a major instructive molecule at inhibitory synapses, where it also clusters GABA type A receptors (PubMed:25025157, PubMed:26613940).

Research Area

Image Data



Western blot analysis of Gephyrin expression in 293T cell lysate.

Note

For research use only.