

**Product Name: gamma Synuclein (4A4) Rabbit
Monoclonal Antibody
Catalog #: AMRe11288**

Summary

Production Name	gamma Synuclein (4A4) Rabbit Monoclonal Antibody
Description	Rabbit Monoclonal Antibody
Host	Rabbit
Application	WB,ELISA
Reactivity	Human,Rat

Performance

Conjugation	Unconjugated
Modification	Unmodified
Isotype	IgG
Clonality	Monoclonal
Form	Liquid
Storage	Store at 4°C short term. Aliquot and store at -20°C long term. Avoid freeze/thaw cycles.
Buffer	Rabbit IgG in phosphate buffered saline , pH 7.4, 150mM NaCl, 0.02% New type preservative N and 50% glycerol. Store at +4°C short term. Store at -20°C long term. Avoid freeze / thaw cycle.
Purification	Affinity purification

Immunogen

Gene Name	SNCG
Alternative Names	BCSG1; Breast cancer specific gene 1 protein; Gamma synuclein; Persyn; PRSN; SNCG; SR; Synoretin; Synuclein gamma;
Gene ID	6623.0
SwissProt ID	O76070.

Application

Dilution Ratio	WB 1:500-1:2000
Molecular Weight	13kDa

**Product Name: gamma Synuclein (4A4) Rabbit
Monoclonal Antibody
Catalog #: AMRe11288**

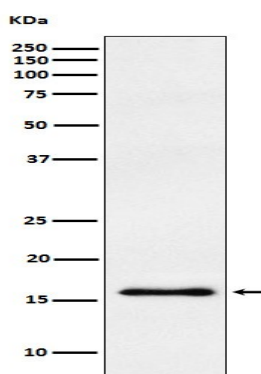


Background

Plays a role in neurofilament network integrity. May be involved in modulating axonal architecture during development and in the adult. In vitro, increases the susceptibility of neurofilament-H to calcium-dependent proteases (By similarity). Plays a role in neurofilament network integrity. May be involved in modulating axonal architecture during development and in the adult. In vitro, increases the susceptibility of neurofilament-H to calcium-dependent proteases (By similarity). May also function in modulating the keratin network in skin. Activates the MAPK and Elk-1 signal transduction pathway (By similarity).

Research Area

Image Data



Western blot analysis of gamma Synuclein expression in human fetal brain lysate.

Note

For research use only.