

**Product Name: FSH beta (FSHB) (3X13) Rabbit
Monoclonal Antibody
Catalog #: AMRe11166**

Summary

| | |
|------------------------|---|
| Production Name | FSH beta (FSHB) (3X13) Rabbit Monoclonal Antibody |
| Description | Rabbit Monoclonal Antibody |
| Host | Rabbit |
| Application | WB,ELISA |
| Reactivity | Human,Rabbit |

Performance

| | |
|---------------------|--|
| Conjugation | Unconjugated |
| Modification | Unmodified |
| Isotype | IgG |
| Clonality | Monoclonal |
| Form | Liquid |
| Storage | Store at 4°C short term. Aliquot and store at -20°C long term. Avoid freeze/thaw cycles. |
| Buffer | Rabbit IgG in phosphate buffered saline , pH 7.4, 150mM NaCl, 0.02% New type preservative N and 50% glycerol. Store at +4°C short term. Store at -20°C long term. Avoid freeze / thaw cycle. |
| Purification | Affinity purification |

Immunogen

| | |
|--------------------------|--|
| Gene Name | FSHB |
| Alternative Names | Follicle Stimulating Hormon; Follitropin beta chain; Follitropin subunit beta; FSHB; FSHbeta; |
| Gene ID | 2488.0 |
| SwissProt ID | P01225. |

Application

| | |
|-------------------------|-----------------|
| Dilution Ratio | WB 1:500-1:2000 |
| Molecular Weight | 15kDa |

**Product Name: FSH beta (FSHB) (3X13) Rabbit
Monoclonal Antibody
Catalog #: AMRe11166**

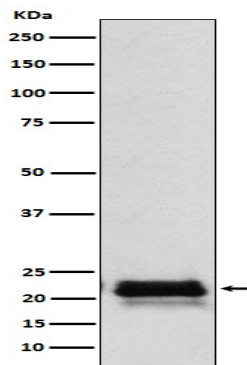


Background

Follicle stimulating hormone enables ovarian folliculogenesis to the antral follicle stage and is essential for Sertoli cell proliferation and maintenance of sperm quality in the testis. Together with the alpha chain CGA constitutes follitropin, the follicle-stimulating hormone, and provides its biological specificity to the hormone heterodimer. Binds FSHR, a G protein-coupled receptor, on target cells to activate downstream signaling pathways (PubMed: [2494176](http://www.uniprot.org/citations/2494176), PubMed: [24692546](http://www.uniprot.org/citations/24692546)). Follitropin is involved in follicle development and spermatogenesis in reproductive organs (PubMed: [407105](http://www.uniprot.org/citations/407105), PubMed: [8220432](http://www.uniprot.org/citations/8220432)).

Research Area

Image Data



Western blot analysis of FSH beta (FSHB) expression in Human pituitary lysate.

Note

For research use only.