

**Product Name: Filamin A (1R12) Rabbit Monoclonal Antibody**  
**Catalog #: AMRe10988**

---



## Summary

<b>Production Name</b>	Filamin A (1R12) Rabbit Monoclonal Antibody
<b>Description</b>	Rabbit Monoclonal Antibody
<b>Host</b>	Rabbit
<b>Application</b>	WB,ELISA
<b>Reactivity</b>	Human,Mouse,Rat

## Performance

<b>Conjugation</b>	Unconjugated
<b>Modification</b>	Unmodified
<b>Isotype</b>	IgG
<b>Clonality</b>	Monoclonal
<b>Form</b>	Liquid
<b>Storage</b>	Store at 4°C short term. Aliquot and store at -20°C long term. Avoid freeze/thaw cycles.
<b>Buffer</b>	Rabbit IgG in phosphate buffered saline , pH 7.4, 150mM NaCl, 0.02% New type preservative N and 50% glycerol. Store at +4°C short term. Store at -20°C long term. Avoid freeze / thaw cycle.
<b>Purification</b>	Affinity purification

## Immunogen

<b>Gene Name</b>	FLNA
<b>Alternative Names</b>	ABP-280; ABPX; actin binding protein 280; Alpha-filamin; filamin 1; filamin A, alpha; FLN1; FLNA; FMD; MNS; NHBP; Non-muscle filamin; OPD; OPD1;
<b>Gene ID</b>	2316.0
<b>SwissProt ID</b>	P21333.

## Application

<b>Dilution Ratio</b>	WB 1:1000-1:2000
<b>Molecular Weight</b>	281kDa

**Product Name: Filamin A (1R12) Rabbit Monoclonal Antibody**  
**Catalog #: AMRe10988**

---

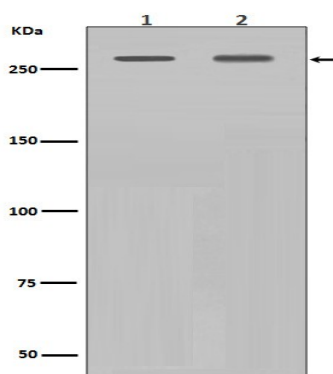


## Background

Promotes orthogonal branching of actin filaments and links actin filaments to membrane glycoproteins. Anchors various transmembrane proteins to the actin cytoskeleton and serves as a scaffold for a wide range of cytoplasmic signaling proteins. Interaction with FLNA may allow neuroblast migration from the ventricular zone into the cortical plate. Promotes orthogonal branching of actin filaments and links actin filaments to membrane glycoproteins. Anchors various transmembrane proteins to the actin cytoskeleton and serves as a scaffold for a wide range of cytoplasmic signaling proteins. Interaction with FLNB may allow neuroblast migration from the ventricular zone into the cortical plate. Tethers cell surface- localized furin, modulates its rate of internalization and directs its intracellular trafficking (By similarity). Involved in ciliogenesis. Plays a role in cell-cell contacts and adherens junctions during the development of blood vessels, heart and brain organs. Plays a role in platelets morphology through interaction with SYK that regulates ITAM- and ITAM-like- containing receptor signaling, resulting in by platelet cytoskeleton organization maintenance (By similarity). During the axon guidance process, required for growth cone collapse induced by SEMA3A-mediated stimulation of neurons (PubMed:<a href="http://www.uniprot.org/citations/25358863" target="\_blank">25358863</a>).

## Research Area

## Image Data



Western blot analysis of Filamin A expression in (1) NIH/3T3 cell lysate;(2) Hela cell lysate.

## Note

For research use only.