

Product Name: Estrogen Inducible Protein pS2 (5F16)
Rabbit Monoclonal Antibody
Catalog #: AMRe10634



Summary

Production Name	Estrogen Inducible Protein pS2 (5F16) Rabbit Monoclonal Antibody
Description	Rabbit Monoclonal Antibody
Host	Rabbit
Application	WB,ELISA
Reactivity	Human

Performance

Conjugation	Unconjugated
Modification	Unmodified
Isotype	IgG
Clonality	Monoclonal
Form	Liquid
Storage	Store at 4°C short term. Aliquot and store at -20°C long term. Avoid freeze/thaw cycles.
Buffer	Rabbit IgG in phosphate buffered saline , pH 7.4, 150mM NaCl, 0.02% New type preservative N and 50% glycerol. Store at +4°C short term. Store at -20°C long term. Avoid freeze / thaw cycle.
Purification	Affinity purification

Immunogen

Gene Name	TFF1
Alternative Names	hP1.A; HP1A; HPS2; pNR2; pS2; TFF1;
Gene ID	7031.0
SwissProt ID	P04155.

Application

Dilution Ratio	WB 1:500-1:2000
Molecular Weight	9kDa

Product Name: Estrogen Inducible Protein pS2 (5F16)
Rabbit Monoclonal Antibody
Catalog #: AMRe10634

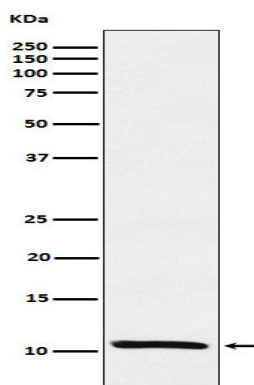


Background

Stabilizer of the mucous gel overlying the gastrointestinal mucosa that provides a physical barrier against various noxious agents. May inhibit the growth of calcium oxalate crystals in urine. Stabilizer of the mucous gel overlying the gastrointestinal mucosa that provides a physical barrier against various noxious agents. May inhibit the growth of calcium oxalate crystals in urine.

Research Area

Image Data



Western blot analysis of Estrogen Inducible Protein pS2 expression in MCF-7 cell lysate.

Note

For research use only.