

**Product Name: ERp19 (19K3) Rabbit Monoclonal Antibody**  
**Catalog #: AMRe10611**

---

## Summary

<b>Production Name</b>	ERp19 (19K3) Rabbit Monoclonal Antibody
<b>Description</b>	Rabbit Monoclonal Antibody
<b>Host</b>	Rabbit
<b>Application</b>	WB,ELISA
<b>Reactivity</b>	Human,Mouse,Rat

## Performance

<b>Conjugation</b>	Unconjugated
<b>Modification</b>	Unmodified
<b>Isotype</b>	IgG
<b>Clonality</b>	Monoclonal
<b>Form</b>	Liquid
<b>Storage</b>	Store at 4°C short term. Aliquot and store at -20°C long term. Avoid freeze/thaw cycles.
<b>Buffer</b>	Rabbit IgG in phosphate buffered saline , pH 7.4, 150mM NaCl, 0.02% New type preservative N and 50% glycerol. Store at +4°C short term. Store at -20°C long term. Avoid freeze / thaw cycle.
<b>Purification</b>	Affinity purification

## Immunogen

<b>Gene Name</b>	TXNDC12
<b>Alternative Names</b>	AG1; AGR1; ER protein 18; ER protein 19; ERP 18; ERP16; ERP19; hAG1; hTLP19; PDIA16; TLP19; TXNDC12;
<b>Gene ID</b>	51060.0
<b>SwissProt ID</b>	O95881.

## Application

<b>Dilution Ratio</b>	WB 1:500-1:2000
<b>Molecular Weight</b>	19kDa

**Product Name: ERp19 (19K3) Rabbit Monoclonal Antibody**  
**Catalog #: AMRe10611**

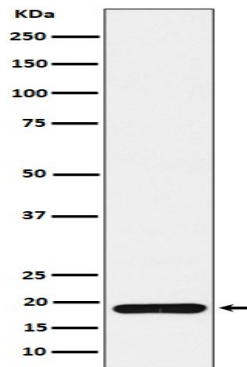
---

## Background

ERp19 belongs to the thioredoxin superfamily. Members of this superfamily possess a thioredoxin fold with a consensus active-site sequence (CxxC) and have roles in redox regulation, defense against oxidative stress, refolding of disulfide-containing proteins, and regulation of transcription factors. Possesses significant protein thiol-disulfide oxidase activity.

## Research Area

## Image Data



Western blot analysis of ERp19 expression in 293T cell lysate.

## Note

For research use only.