

Product Name: EBP1 / PA2G4 (2M5) Rabbit Monoclonal Antibody
Catalog #: AMRe10274

Summary

Production Name	EBP1 / PA2G4 (2M5) Rabbit Monoclonal Antibody
Description	Rabbit Monoclonal Antibody
Host	Rabbit
Application	WB
Reactivity	Human,Mouse,Rat

Performance

Conjugation	Unconjugated
Modification	Unmodified
Isotype	IgG
Clonality	Monoclonal
Form	Liquid
Storage	Store at 4°C short term. Aliquot and store at -20°C long term. Avoid freeze/thaw cycles.
Buffer	Supplied in 50mM Tris-Glycine(pH 7.4), 0.15M NaCl, 40%Glycerol, 0.01% New type preservative N and 0.05% BSA.
Purification	Affinity purification

Immunogen

Gene Name	PA2G4
Alternative Names	hG4 1; Mpp1; p38 2G4; Pa2g4; Plfap;
Gene ID	5036.0
SwissProt ID	Q9UQ80.A synthetic peptide of human EBP1

Application

Dilution Ratio	WB: 1:2000-1:10000
Molecular Weight	44kDa

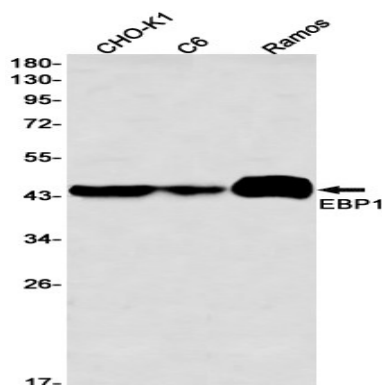
Background

Product Name: EBP1 / PA2G4 (2M5) Rabbit Monoclonal Antibody
Catalog #: AMRe10274

May play a role in a ERBB3-regulated signal transduction pathway. Seems be involved in growth regulation. Acts a corepressor of the androgen receptor (AR) and is regulated by the ERBB3 ligand neuregulin-1/hereregulin (HRG). May play a role in a ERBB3-regulated signal transduction pathway. Seems be involved in growth regulation. Acts a corepressor of the androgen receptor (AR) and is regulated by the ERBB3 ligand neuregulin-1/hereregulin (HRG). Inhibits transcription of some E2F1- regulated promoters, probably by recruiting histone acetylase (HAT) activity. Binds RNA. Associates with 28S, 18S and 5.8S mature rRNAs, several rRNA precursors and probably U3 small nucleolar RNA. May be involved in regulation of intermediate and late steps of rRNA processing. May be involved in ribosome assembly. Mediates cap- independent translation of specific viral IRESs (internal ribosomal entry site) (By similarity). Regulates cell proliferation, differentiation, and survival. Isoform 1 suppresses apoptosis whereas isoform 2 promotes cell differentiation (By similarity).

Research Area

Image Data



Western blot detection of EBP1 in CHO-K1,C6,Ramos cell lysates using EBP1 antibody(1:1000 diluted).

Note

For research use only.