

**Product Name: Dysferlin (19Q14) Rabbit Monoclonal Antibody**  
**Catalog #: AMRe10242**

---



## Summary

<b>Production Name</b>	Dysferlin (19Q14) Rabbit Monoclonal Antibody
<b>Description</b>	Rabbit Monoclonal Antibody
<b>Host</b>	Rabbit
<b>Application</b>	WB,ELISA
<b>Reactivity</b>	Human,Mouse

## Performance

<b>Conjugation</b>	Unconjugated
<b>Modification</b>	Unmodified
<b>Isotype</b>	IgG
<b>Clonality</b>	Monoclonal
<b>Form</b>	Liquid
<b>Storage</b>	Store at 4°C short term. Aliquot and store at -20°C long term. Avoid freeze/thaw cycles.
<b>Buffer</b>	Rabbit IgG in phosphate buffered saline , pH 7.4, 150mM NaCl, 0.02% New type preservative N and 50% glycerol. Store at +4°C short term. Store at -20°C long term. Avoid freeze / thaw cycle.
<b>Purification</b>	Affinity purification

## Immunogen

<b>Gene Name</b>	DYSF
<b>Alternative Names</b>	DYSF; Dysferlin; Fer-1-like protein 1;
<b>Gene ID</b>	8291.0
<b>SwissProt ID</b>	O75923.

## Application

<b>Dilution Ratio</b>	WB 1:500-1:1000
<b>Molecular Weight</b>	237kDa

**Product Name: Dysferlin (19Q14) Rabbit Monoclonal Antibody**  
**Catalog #: AMRe10242**

---

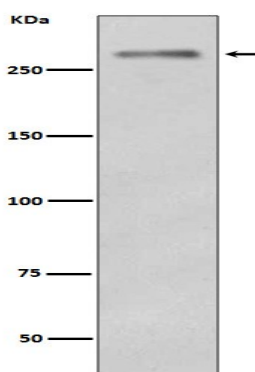


## Background

Dysferlin Key calcium ion sensor involved in the  $\text{Ca}^{2+}$ -triggered synaptic vesicle-plasma membrane fusion. Plays a role in the sarcolemma repair mechanism of both skeletal muscle and cardiomyocytes that permits rapid resealing of membranes disrupted by mechanical stress. Belongs to the ferlin family. Interacts with CACNA1S. Interacts with ANXA1; the interaction is  $\text{Ca}^{2+}$ - and injury state-dependent. Key calcium ion sensor involved in the  $\text{Ca}^{2+}$ -triggered synaptic vesicle-plasma membrane fusion. Plays a role in the sarcolemma repair mechanism of both skeletal muscle and cardiomyocytes that permits rapid resealing of membranes disrupted by mechanical stress (By similarity).

## Research Area

## Image Data



Western blot analysis of Dysferlin expression in Mouse skeletal muscle tissue lysate.

## Note

For research use only.