

Product Name: Cytokeratin 10 (7W9) Rabbit Monoclonal Antibody
Catalog #: AMRe09718

Summary

Production Name	Cytokeratin 10 (7W9) Rabbit Monoclonal Antibody
Description	Rabbit Monoclonal Antibody
Host	Rabbit
Application	WB
Reactivity	Human,Mouse,Rat

Performance

Conjugation	Unconjugated
Modification	Unmodified
Isotype	IgG
Clonality	Monoclonal
Form	Liquid
Storage	Store at 4°C short term. Aliquot and store at -20°C long term. Avoid freeze/thaw cycles.
Buffer	Supplied in 50mM Tris-Glycine(pH 7.4), 0.15M NaCl, 40%Glycerol, 0.01% New type preservative N and 0.05% BSA.
Purification	Affinity purification

Immunogen

Gene Name	KRT10
Alternative Names	CK-10; CK10; cytokeratin 10; Cytokeratin-10; K10; K1C10; keratin 10; Keratin, type I cytoskeletal 10; Keratin-10; KPP; KRT10;
Gene ID	3858.0
SwissProt ID	P13645.A synthetic peptide of human Cytokeratin 10

Application

Dilution Ratio	WB: 1:5000
Molecular Weight	59kDa

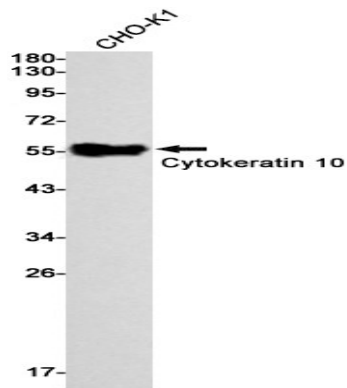
Product Name: Cytokeratin 10 (7W9) Rabbit Monoclonal Antibody
Catalog #: AMRe09718

Background

K10 a type I cytoskeletal keratin. The keratins are intermediate filament proteins responsible for the structural integrity of epithelial cells and are subdivided into cytokeratins and hair keratins. There are two types of cytoskeletal and microfibrillar keratin: type I (acidic; 40-55 kDa) [K9 to K20] and type II (neutral to basic; 56-70 kDa) [K1 to K8]. Both a basic and an acidic keratin are required for filament assembly. Plays a role in the establishment of the epidermal barrier on plantar skin.

Research Area

Image Data



Western blot detection of Cytokeratin 10 in CHO-K1 cell lysates using Cytokeratin 10 antibody(1:1000 diluted).

Note

For research use only.