

Product Name: Cyclin E2 (7T5) Rabbit Monoclonal Antibody
Catalog #: AMRe09597

Summary

Production Name	Cyclin E2 (7T5) Rabbit Monoclonal Antibody
Description	Rabbit Monoclonal Antibody
Host	Rabbit
Application	WB
Reactivity	Human

Performance

Conjugation	Unconjugated
Modification	Unmodified
Isotype	IgG
Clonality	Monoclonal
Form	Liquid
Storage	Store at 4°C short term. Aliquot and store at -20°C long term. Avoid freeze/thaw cycles.
Buffer	Supplied in 50mM Tris-Glycine(pH 7.4), 0.15M NaCl, 40%Glycerol, 0.01% New type preservative N and 0.05% BSA.
Purification	Affinity purification

Immunogen

Gene Name	CCNE2
Alternative Names	CGE2; CYCE2; cyclin E2; G1/S-Specific cyclin E2;
Gene ID	9134.0
SwissProt ID	O96020.A synthetic peptide of human Cyclin E2

Application

Dilution Ratio	WB: 1:1000-1:5000
Molecular Weight	47kDa

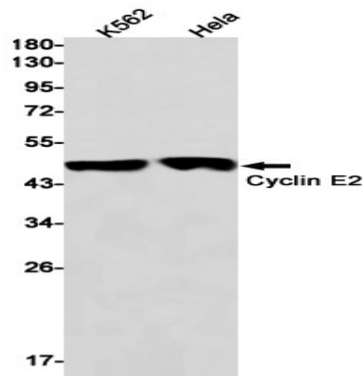
Background

Product Name: Cyclin E2 (7T5) Rabbit Monoclonal Antibody
Catalog #: AMRe09597

The human Cyclin E2 gene encodes a 404 amino acid protein that is most closely related to Cyclin E. Cyclin E2 mRNA levels peak at the G1 / S transition. Cyclin E2 associates with Cdk2 in a functional kinase complex that is inhibited by both p27 (Kip1) and p21 (Cip1). Cyclin E2 / Cdk2 phosphorylates histone H1 in vitro. G1 cyclin E controls the initiation of DNA synthesis by activating CDK2. Abnormally high levels of cyclin E expression have frequently been observed in human cancers. Essential for the control of the cell cycle at the late G1 and early S phase.

Research Area

Image Data



Western blot detection of Cyclin E2 in K562, HeLa cell lysates using Cyclin E2 antibody (1:1000 diluted).

Note

For research use only.