

**Product Name: Cyclin A1/A2 (9S13) Rabbit Monoclonal Antibody**  
**Catalog #: AMRe09579**

---



## Summary

<b>Production Name</b>	Cyclin A1/A2 (9S13) Rabbit Monoclonal Antibody
<b>Description</b>	Rabbit Monoclonal Antibody
<b>Host</b>	Rabbit
<b>Application</b>	WB,ELISA
<b>Reactivity</b>	Human

## Performance

<b>Conjugation</b>	Unconjugated
<b>Modification</b>	Unmodified
<b>Isotype</b>	IgG
<b>Clonality</b>	Monoclonal
<b>Form</b>	Liquid
<b>Storage</b>	Store at 4°C short term. Aliquot and store at -20°C long term. Avoid freeze/thaw cycles.
<b>Buffer</b>	Rabbit IgG in phosphate buffered saline , pH 7.4, 150mM NaCl, 0.02% New type preservative N and 50% glycerol. Store at +4°C short term. Store at -20°C long term. Avoid freeze / thaw cycle.
<b>Purification</b>	Affinity purification

## Immunogen

<b>Gene Name</b>	
<b>Alternative Names</b>	CCN1; CCNA; CCNA1; CCNA2; CT146; Cyclin-A; Cyclin-A1; Cyclin-A2;
<b>Gene ID</b>	
<b>SwissProt ID</b>	P20248/P78396.

## Application

<b>Dilution Ratio</b>	WB 1:500-1:1000
<b>Molecular Weight</b>	52,49kDa

**Product Name: Cyclin A1/A2 (9S13) Rabbit Monoclonal Antibody**  
**Catalog #: AMRe09579**

---

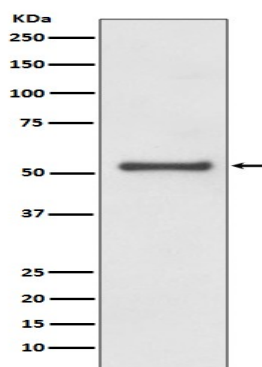


## Background

May primarily function in the control of the germline meiotic cell cycle and additionally in the control of mitotic cell cycle in some somatic cells. Essential for the control of the cell cycle at the G1/S (start) and the G2/M (mitosis) transitions.

## Research Area

## Image Data



Western blot analysis of Cyclin A1/A2 expression in HeLa cell lysate.

## Note

For research use only.