

Product Name: CTP synthase / CTPS (13B6) Rabbit Monoclonal Antibody
Catalog #: AMRe09512

Summary

Production Name	CTP synthase / CTPS (13B6) Rabbit Monoclonal Antibody
Description	Rabbit Monoclonal Antibody
Host	Rabbit
Application	WB
Reactivity	Human,Mouse,Rat

Performance

Conjugation	Unconjugated
Modification	Unmodified
Isotype	IgG
Clonality	Monoclonal
Form	Liquid
Storage	Store at 4°C short term. Aliquot and store at -20°C long term. Avoid freeze/thaw cycles.
Buffer	Supplied in 50mM Tris-Glycine(pH 7.4), 0.15M NaCl, 40%Glycerol, 0.01% New type preservative N and 0.05% BSA.
Purification	Affinity purification

Immunogen

Gene Name	CTPS1
Alternative Names	CTP synthase 1; CTPS; IMD24;
Gene ID	1503.0
SwissProt ID	P17812.A synthetic peptide of human CTP synthase

Application

Dilution Ratio	WB: 1:1000
Molecular Weight	67kDa

Background

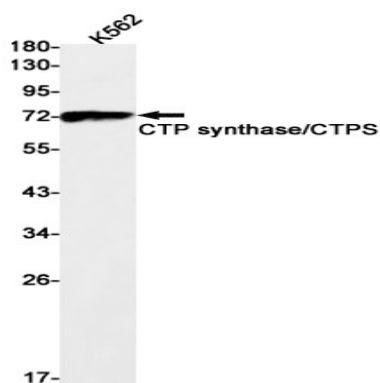
**Product Name: CTP synthase / CTPS (13B6) Rabbit
Monoclonal Antibody
Catalog #: AMRe09512**



CTP synthase (CTPS) catalyzes the ATP-dependent conversion of UTP to CTP using either L-glutamine or ammonia as the source of nitrogen. The enzyme is important in the biosynthesis nucleic acids. It has a key role in cell growth, development, and tumorigenesis. This enzyme is involved in the de novo synthesis of CTP, a precursor of DNA, RNA and phospholipids. Catalyzes the ATP-dependent amination of UTP to CTP with either L-glutamine or ammonia as a source of nitrogen. This enzyme and its product, CTP, play a crucial role in the proliferation of activated lymphocytes and therefore in immunity.

Research Area

Image Data



Western blot detection of CTP synthase/CTPS in K562 cell lysates using CTP synthase/CTPS antibody(1:1000 diluted).

Note

For research use only.