

Product Name: CRTC3 (15L1) Rabbit Monoclonal Antibody
Catalog #: AMRe09430

Summary

Production Name	CRTC3 (15L1) Rabbit Monoclonal Antibody
Description	Rabbit Monoclonal Antibody
Host	Rabbit
Application	WB
Reactivity	Human,Mouse,Rat

Performance

Conjugation	Unconjugated
Modification	Unmodified
Isotype	IgG
Clonality	Monoclonal
Form	Liquid
Storage	Store at 4°C short term. Aliquot and store at -20°C long term. Avoid freeze/thaw cycles.
Buffer	Supplied in 50mM Tris-Glycine(pH 7.4), 0.15M NaCl, 40%Glycerol, 0.01% New type preservative N and 0.05% BSA.
Purification	Affinity purification

Immunogen

Gene Name	CRTC3
Alternative Names	CRTC3; TORC3;
Gene ID	64784.0
SwissProt ID	Q6UUV7.A synthetic peptide of human CRTC3

Application

Dilution Ratio	WB: 1:2000
Molecular Weight	67kDa

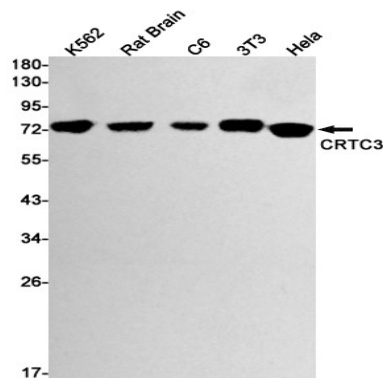
Background

Product Name: CRTC3 (15L1) Rabbit Monoclonal Antibody
Catalog #: AMRe09430

Transcriptional coactivator for CREB1 which activates transcription through both consensus and variant cAMP response element (CRE) sites. Acts as a coactivator, in the SIK/TORC signaling pathway, being active when dephosphorylated and acts independently of CREB1 'Ser-133' phosphorylation. Enhances the interaction of CREB1 with TAF4. Regulates the expression of specific CREB-activated genes such as the steroidogenic gene, StAR. Transcriptional coactivator for CREB1 which activates transcription through both consensus and variant cAMP response element (CRE) sites. Acts as a coactivator, in the SIK/TORC signaling pathway, being active when dephosphorylated and acts independently of CREB1 'Ser-133' phosphorylation. Enhances the interaction of CREB1 with TAF4. Regulates the expression of specific CREB-activated genes such as the steroidogenic gene, StAR. Potent coactivator of PPARGC1A and inducer of mitochondrial biogenesis in muscle cells. Also coactivator for TAX activation of the human T-cell leukemia virus type 1 (HTLV-1) long terminal repeats (LTR).

Research Area

Image Data



Western blot detection of CRTC3 in K562,Rat Brain,C6,3T3,HeLa cell lysates using CRTC3 antibody(1:1000 diluted).

Note

For research use only.