

**Product Name: Complement factor B (5X5) Rabbit
Monoclonal Antibody**
Catalog #: AMRe09226



Summary

Production Name	Complement factor B (5X5) Rabbit Monoclonal Antibody
Description	Rabbit Monoclonal Antibody
Host	Rabbit
Application	WB,ELISA
Reactivity	Human

Performance

Conjugation	Unconjugated
Modification	Unmodified
Isotype	IgG
Clonality	Monoclonal
Form	Liquid
Storage	Store at 4°C short term. Aliquot and store at -20°C long term. Avoid freeze/thaw cycles.
Buffer	Rabbit IgG in phosphate buffered saline , pH 7.4, 150mM NaCl, 0.02% New type preservative N and 50% glycerol. Store at +4°C short term. Store at -20°C long term. Avoid freeze / thaw cycle.
Purification	Affinity purification

Immunogen

Gene Name	CFB
Alternative Names	C3/C5 convertase; Complement factor B; PBF2; Properdin factor B;
Gene ID	629.0
SwissProt ID	P00751.

Application

Dilution Ratio	WB 1:500-1:2000
Molecular Weight	86kDa

**Product Name: Complement factor B (5X5) Rabbit
Monoclonal Antibody
Catalog #: AMRe09226**

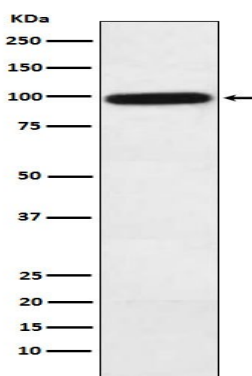


Background

Factor B which is part of the alternate pathway of the complement system is cleaved by factor D into 2 fragments: Ba and Bb. Bb, a serine protease, then combines with complement factor 3b to generate the C3 or C5 convertase. Factor B which is part of the alternate pathway of the complement system is cleaved by factor D into 2 fragments: Ba and Bb. Bb, a serine protease, then combines with complement factor 3b to generate the C3 or C5 convertase. It has also been implicated in proliferation and differentiation of preactivated B-lymphocytes, rapid spreading of peripheral blood monocytes, stimulation of lymphocyte blastogenesis and lysis of erythrocytes. Ba inhibits the proliferation of preactivated B-lymphocytes.

Research Area

Image Data



Western blot analysis of Complement factor B expression in Human plasma lysate.

Note

For research use only.