

Product Name: Claudin 4 (6G15) Rabbit Monoclonal Antibody
Catalog #: AMRe08896



Summary

Production Name	Claudin 4 (6G15) Rabbit Monoclonal Antibody
Description	Rabbit Monoclonal Antibody
Host	Rabbit
Application	WB,ELISA
Reactivity	Human

Performance

Conjugation	Unconjugated
Modification	Unmodified
Isotype	IgG
Clonality	Monoclonal
Form	Liquid
Storage	Store at 4°C short term. Aliquot and store at -20°C long term. Avoid freeze/thaw cycles.
Buffer	Rabbit IgG in phosphate buffered saline , pH 7.4, 150mM NaCl, 0.02% New type preservative N and 50% glycerol. Store at +4°C short term. Store at -20°C long term. Avoid freeze / thaw cycle.
Purification	Affinity purification

Immunogen

Gene Name	CLDN4 CLD4; CLDN4; CPE- receptor; CPE-R; CPER; CPETR1; Clostridium perfringens enterotoxin receptor; WBSCR8; Williams-Beuren syndrome chromosome region 8 protein;
Alternative Names	
Gene ID	1364.0
SwissProt ID	O14493.

Application

Dilution Ratio	WB 1:500-1:1000
Molecular Weight	22kDa

Product Name: Claudin 4 (6G15) Rabbit Monoclonal Antibody
Catalog #: AMRe08896

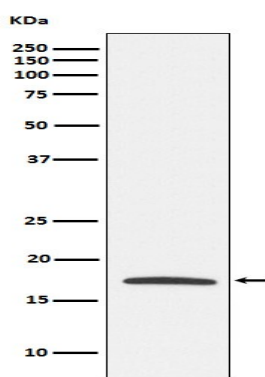


Background

Plays a major role in tight junction-specific obliteration of the intercellular space. Channel-forming tight junction protein that mediates paracellular chloride transport in the kidney. Plays a critical role in the paracellular reabsorption of filtered chloride in the kidney collecting ducts. Claudins play a major role in tight junction-specific obliteration of the intercellular space, through calcium-independent cell-adhesion activity.

Research Area

Image Data



Western blot analysis of Claudin 4 expression in MCF7 cell lysate.

Note

For research use only.