

Product Name: Cdc6 (14X12) Rabbit Monoclonal Antibody
Catalog #: AMRe08528

Summary

Production Name	Cdc6 (14X12) Rabbit Monoclonal Antibody
Description	Rabbit Monoclonal Antibody
Host	Rabbit
Application	WB,ELISA
Reactivity	Human

Performance

Conjugation	Unconjugated
Modification	Unmodified
Isotype	IgG
Clonality	Monoclonal
Form	Liquid
Storage	Store at 4°C short term. Aliquot and store at -20°C long term. Avoid freeze/thaw cycles.
Buffer	Rabbit IgG in phosphate buffered saline , pH 7.4, 150mM NaCl, 0.02% New type preservative N and 50% glycerol. Store at +4°C short term. Store at -20°C long term. Avoid freeze / thaw cycle.
Purification	Affinity purification

Immunogen

Gene Name	CDC6
Alternative Names	CDC6; CDC18L; CDC6-related protein; Cdc18-related protein; HsCDC6; HsCDC18; p62(cdc6);
Gene ID	990.0
SwissProt ID	Q99741.

Application

Dilution Ratio	WB 1:500-1:2000
Molecular Weight	63kDa

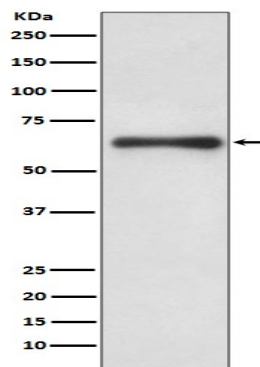
Product Name: Cdc6 (14X12) Rabbit Monoclonal Antibody
Catalog #: AMRe08528

Background

Involved in the initiation of DNA replication. Also participates in checkpoint controls that ensure DNA replication is completed before mitosis is initiated. Cdc6 has recently been shown to play an important role in the intra-S-phase p21 Waf1/Cip1-dependent DNA damage response. Both cdc6 and CDT1 are degraded by the ubiquitin proteasome pathway in response to DNA damage associated with re-replication. Involved in the initiation of DNA replication. Also participates in checkpoint controls that ensure DNA replication is completed before mitosis is initiated.

Research Area

Image Data



Western blot analysis of Cdc6 expression in HeLa cell lysate treated with hydroxyurea.

Note

For research use only.